



TENSOLED



VisualTech Group



ABOUT PVC STRETCH FILM



PVC stretch Ceiling

are fire rated B-s1d0 and B-s2d0 which considers 3 different aspects during a fire for classifying the material: no heat, no smoke, and no dripping. They are also UL and ULC certified.

The dimensional stability of an installed stretch ceiling is between -15o to + 45° Celsius.

The melting point of PVC ceilings varies in the range between 150-190° Celsius and it depends on the formula of the specific material.

Incorrectly specified building and interior materials or finishes provide homes for bacteria and fungi. Vecta Design stretch ceilings are suitable and safe to use in rooms with high humidity (spas, bathrooms, saunas, also in high steam areas) because stretch ceilings are moisture-repellent. Stretch material is also antibacterial and antistatic. Our BIOpruf PVC film is treated with 1.2% VINYZENE IT 4010 DIDP, which will ensure the material resistance to any type of bacterial and fungal growth. The contamination of inert surfaces by microorganisms is therefore not possible.

In case of unexpected leakage of water, the ceiling will withstand pressures of up to 150 kg per square meter. The

extra weight does not damage the material but stretches it temporarily out. Re-opening the ceiling allows the specialist to easily eliminate the cause of the damage, and the ceiling then restores its original appearance and good qualities. As a bonus, the material is resistant to saltwater and chlorine water.

With the hollow ceiling or high floor, the stretch ceiling creates an airlock which is similar to double glazing. The ceiling forms an insulating buffer and prevents condensation forming on the surface of the ceiling. Stretch ceiling offers a dual-energy saving because it helps to reduce heat loss from attic floors and decreases volumes to be heated through an easy installation at the desired height. Prevent thermal bridges. Heat conductivity coefficient: 0.16 x cal/m H°C.

Stretch ceiling and wall solutions are flexible because it is possible to hide all wires, ventilation systems, etc behind the ceiling and on the surface can be installed any lamps, smoke detectors, ventilation openings, etc. Besides aesthetic look our ceiling solutions have also practical and functional qualities, like great acoustic absorption, possibility to add

infrared panels and speakers inside the decorative wall panels, possibility to use BIO pruf material, which is antibacterial and many different designs when creating lighting stretch ceiling or adding lamps to the ceiling. As the ceiling can be dismantled easily, allowing comfortable access behind the ceiling. There can also be quick and clean work done, whenever there comes an idea of adding some additional new lighting or technical equipment on or behind the ceiling. Additional advantages of stretch material: cadmium-free; hygienic; antifungal coating; sterilizable; insensitive to radiation; insensitive to condensation; water repellent; shape and tension-retentive molecules (absorb ball impacts, water damage); antistatic; return to their initial shape after distortion; non-toxic (free from phthalates); allows the ceiling to be opened and closed again whenever needed; washable; recyclable.





ABOUT PVC STRETCH FILM

Product information

Definition:	PVC-film in monomeric quality, phthalatfree, several colours with high gloss embossing. Specially designed for indoor - decoration with flame retardant additives.
Reaction to fire classification:	B-s1,d0 and B-s2,d0
Growth of microorganisms:	No Biocide substance used
Thickness:	0,170 mm (min 0,153 mm / max 0,187 mm) DIN EN ISO 2286-3
Weight:	212.68 g/m ²
Hydrometric characteristic	Stretched ceiling films meet the requirement of NF EN 14716 § 4.1.3 for the water vapour transmission (<50 g/m ² .24h)

Tensile stress at break	Method	Unit	MD	CD
	DIN EN ISO 527-3/2/200	MPa	20	20

Tensile strain at break	Method	Unit	MD	CD
	DIN EN ISO 527-3/2/200	%	190	260

Reflection characteristics:	Reflection %
- Laquered	90
- Matt	5
- Satin	10
- Metallic	65

Light transmission of transparent PVC	Transmission %
- TT-400 Pure White	68
- TT-402 Crystal	41
- TT-403 White	42
- TT-404 Extra	30
- TT-405 Lumi	47

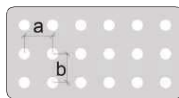
Ecology 100 % recyclable - phthalates free - cadmium free - arsenic free - mercury free. Covering & print are A+ certified

Resistance to humidity Yes

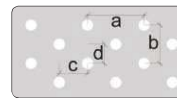


AUCUSTIC CEILING

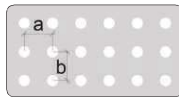
When room acoustics needs improving, **acoustics ceiling** soundproofing ceiling solutions are an easy, safe and effective way to make any space acoustical quality better. Perforated stretch material is a great sound absorber and when used with an absorption sheet the rated acoustics class is A. We offer two kinds of absorbents with a density of 25 kg/m³: the thickness of 30 mm and 50mm. Build a whole acoustic ceiling or add acoustic (Silent) panels to the space in order to create quieter areas and zones in larger spaces.



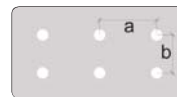
Microperforation Volans
 a - 1,8 mm | Holes: 300 000/m²
 b - 1,8 mm | Hole diameter: 0,1 mm
 ø - 0,1 mm
 Max perforation width 200 cm



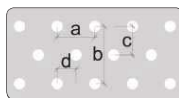
Macroperforation Cetus
 a - 8 mm | Holes: 52 000/m²
 b - 5 mm | Hole diameter: 1 mm
 c - 4 mm
 d - 2,5 mm
 ø - 1 mm
 Max perforation width 200 cm



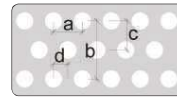
Microperforation Volans Premium
 a - 1,8 mm | Holes: 300 000/m²
 b - 1,8 mm | Hole diameter: 0,15 mm
 ø - 0,15 mm
 Max perforation width 200 cm



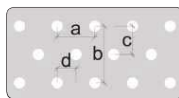
Macroperforation Crater
 a - 8 mm | Holes: 32 500/m²
 b - 4 mm | Hole diameter: 1 mm
 ø - 1 mm
 Max perforation width 200 cm



Microperforation Auriga
 a - 2 mm | Holes: 275 000/m²
 b - 3,6 mm | Hole diameter: 0,1 mm
 c - 1,8 mm
 d - 1 mm
 ø - 0,1 mm
 Max perforation width 200 cm



Macroperforation Libra
 a - 2,1 mm | Holes: 254 000/m²
 b - 3,63 mm | Hole diameter: 1,3 mm
 c - 1,82 mm
 d - 1,05 mm
 ø - 1,3 mm
 Max perforation width 160 cm



Microperforation Orion
 a - 2 mm | Holes: 290 000/m²
 b - 3,6 mm | Hole diameter: 0,30 mm
 c - 1,8 mm
 d - 1 mm
 ø - 0,3 mm
 Max perforation width 200 cm

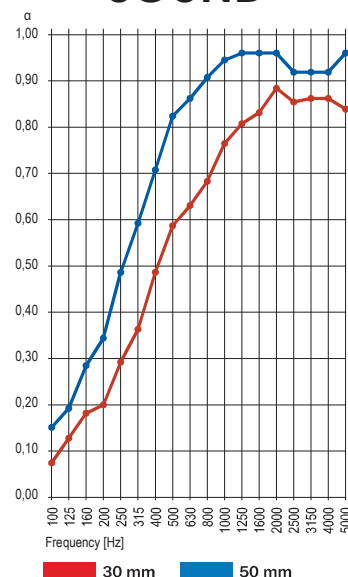




AUCUSTIC CEILING



SOUND



Frequency [Hz]	Reverberation times, [S]		Sound absorption coefficient, α_s	Expanded uncertainty, U	Effective degrees of freedom	Coverage factor	Coverage probability, [%]
	Empty room, T1	Room with sample, T2					
100	12,7	9,3 / 7,2	0,07 / 0,15	0,02 / 0,01	30 / 34	2,09 / 2,08	95,45
125	11,6	7,3 / 6,2	0,12 / 0,19	0,01 / 0,01	29 / 26	2,09 / 2,11	
160	11,6	6,4 / 5,1	0,18 / 0,28	0,01 / 0,02	33 / 23	2,08 / 2,11	
200	11,3	5,9 / 4,4	0,20 / 0,34	0,01 / 0,02	26 / 19	2,11 / 2,14	
250	11,1	4,8 / 3,5	0,29 / 0,48	0,02 / 0,03	19 / 18	2,14 / 2,16	
315	11,5	4,3 / 3,0	0,36 / 0,59	0,01 / 0,02	26 / 20	2,11 / 2,14	
400	10,4	3,4 / 2,6	0,48 / 0,71	0,02 / 0,03	20 / 18	2,14 / 2,15	
500	9,3	2,9 / 2,3	0,58 / 0,83	0,04 / 0,04	17 / 17	2,16 / 2,16	
630	9,1	2,7 / 2,2	0,63 / 0,86	0,02 / 0,03	18 / 17	2,16 / 2,16	
800	8,4	2,5 / 2,0	0,68 / 0,91	0,02 / 0,03	18 / 18	2,15 / 2,16	
1000	7,5	2,3 / 1,9	0,77 / 0,94	0,02 / 0,02	18 / 18	2,15 / 2,15	
1250	6,0	2,0 / 1,8	0,81 / 0,96	0,02 / 0,03	19 / 19	2,15 / 2,15	
1600	5,7	2,0 / 1,8	0,83 / 0,96	0,02 / 0,03	20 / 18	2,14 / 2,16	
2000	5,3	1,8 / 1,7	0,88 / 0,96	0,01 / 0,02	20 / 20	2,14 / 2,14	
2500	4,4	1,8 / 1,7	0,85 / 0,92	0,02 / 0,02	19 / 19	2,14 / 2,14	
3150	3,6	1,6 / 1,5	0,86 / 0,92	0,01 / 0,02	23 / 19	2,12 / 2,15	
4000	2,9	1,4 / 1,4	0,86 / 0,92	0,02 / 0,02	22 / 23	2,12 / 2,11	
5000	2,3	1,3 / 1,2	0,83 / 0,96	0,02 / 0,02	25 / 23	2,11 / 2,11	

Sound absorption rating

With sound absorption sheet*

Sound absorption rating according to ISO 11654:

Weighted sound absorption coefficient $\alpha_w = 0.90$ (L)

Sound absorption class: A

Sound absorption rating according to ASTM C423:

Noise Reduction Coefficient NRC = 1.00

Sound Absorption Average SAA = 1.00

Without sound absorption sheet*

Sound absorption rating according to ISO 11654:

Weighted sound absorption coefficient $\alpha_w = 0.45$ (L)

Sound absorption class: D

Sound absorption rating according to ASTM C423:

Noise Reduction Coefficient NRC = 0.55

Sound Absorption Average SAA = 0.55

* - For microperforation Auriga



AUCUSTIC CEILING

Acoustics Ceiling recommends the optimal size of a perforated ceiling in one piece to be approx. 40-50 m², but the recommended size depends on the shape of the ceiling also and the perforated material chosen. If the project has many cut-outs, then also larger perforated ceilings can be made, because the penetration is much smaller if there are more ceiling mounting points. The perforated ceiling is reduced less than the ordinary stretch ceiling and this puts the limits to the maximum size of the ceilings for the result to be flat and durably beautiful.

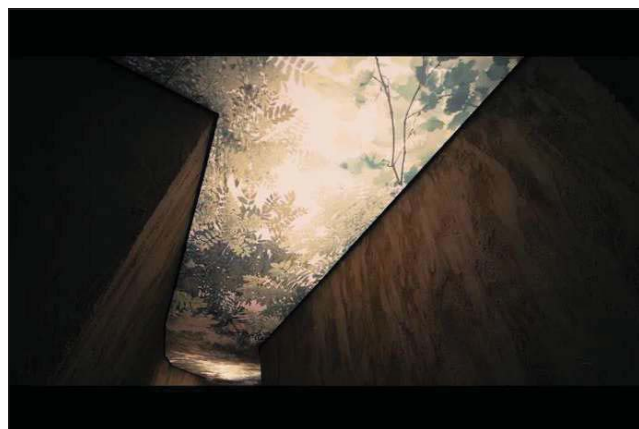
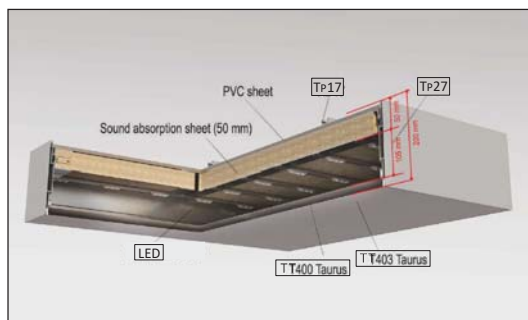
The bigger the perforated holes the better the product sound absorption qualities. When building large public spaces, where the ceilings are high, in facilities like concert halls, sports halls, exhibition centers, cultural purpose buildings but also educational buildings – the perforations with bigger holes work perfectly well and this is also proven by the tests (like our Orion, Cetus, Crater). In case you are building rooms with lower ceilings, we recommend solutions with smaller holes among our perforated materials (Volans Premium, Volans, Auriga). All our acoustic perforated solutions are suitable to use to cover the whole ceilings, but also to make panels and modules for the ceilings and on the walls. In case of creating a light ceiling or using a transparent material, we recommend 2 layer solution, so that LED light elements would be aesthetically covered.

Transmission rates and light power

Transmission rates for translucent materials:

- T T-400 Pure White opacity is 34,54
- T T-402 Crystal opacity is 61,37
- T T-403 White opacity is 60,47
- T T-405 Lumi opacity is 58,12

Whereas 100 means 100% opacity (no light passes through) and the value 0 corresponds to 100% transparency





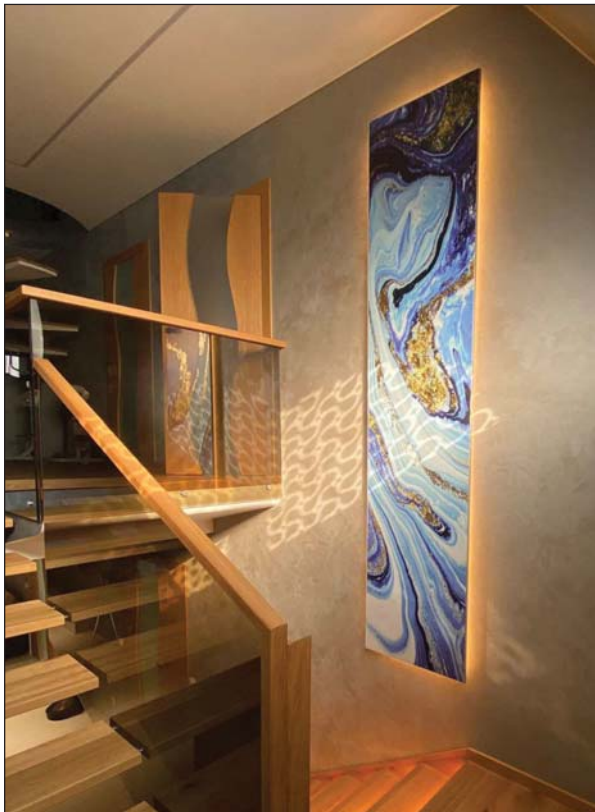
VisualTech Group

Tensoled _ Ceiling

TENSOLED

SOUND AND SILENT SYSTEM

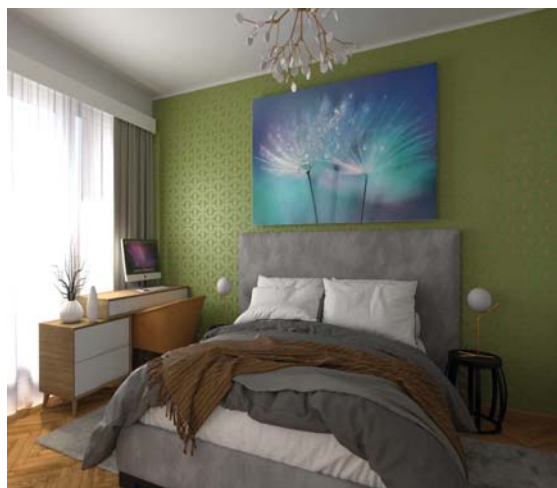
Elegant and sharp edge frames as both practical and beautiful interior additions will make one of the most popular leisure activity, listening music, even more enjoyable as it can bring your favorite colors, beloved art or even some great memories (when photos are printed on the canva) right into the interior design. The speakers are integrated inside the panels. The solution can be made without any annoying wires to be seen and without complicated settings to learn as the panel will be supplied as ready to use sound system. The integrated speaker is easily adaptable with a cellphone or other smart devices by Bluetooth.





SOUND AND SILENT SYSTEM

Sounds are an extremely important and valuable part of life. But there are good sounds and bad sounds. Bad is when a sound becomes noise, that can have a negative influence on our physical and mental health. Unreasonable noise can cause stress, productivity losses in the workplace, communication difficulties and fatigue from lack of sleep, to more serious issues. Noise pollution is a serious health concern worth our attention. We offer tailor-made wall panels with maximum, class A sound-absorbing qualities and custom design, printed on the panels. The sound absorption rate will have excellent results in reducing echoes and unnecessary noise with absorption sheet (3cm or 5cm) included in the panels.





VisualTech Group

Tensoled _ Ceiling

TENSOLED

MIRROR CEILING

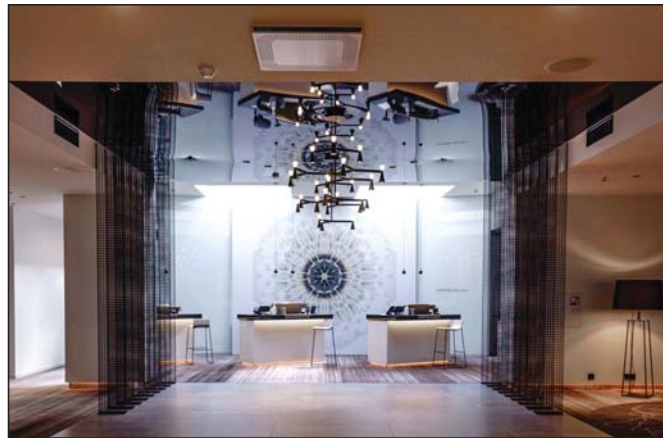
Mirror Ceiling modules have high reflectivity and can be specified as a safe alternative to conventional glass mirrors. The mirror modules are custom made to order with maximum dimensions of 300cm x 125cm and fixings as required. Material is UV printable. Round modules are not possible. Mirror material does not stretch. Mirror material is installed cold and in case of small wrinkles heated after



Mirror material is not allowed to be folded.



Distance between outer walls of profile





VisualTech Group

TENSOLED

MIRROR CEILING

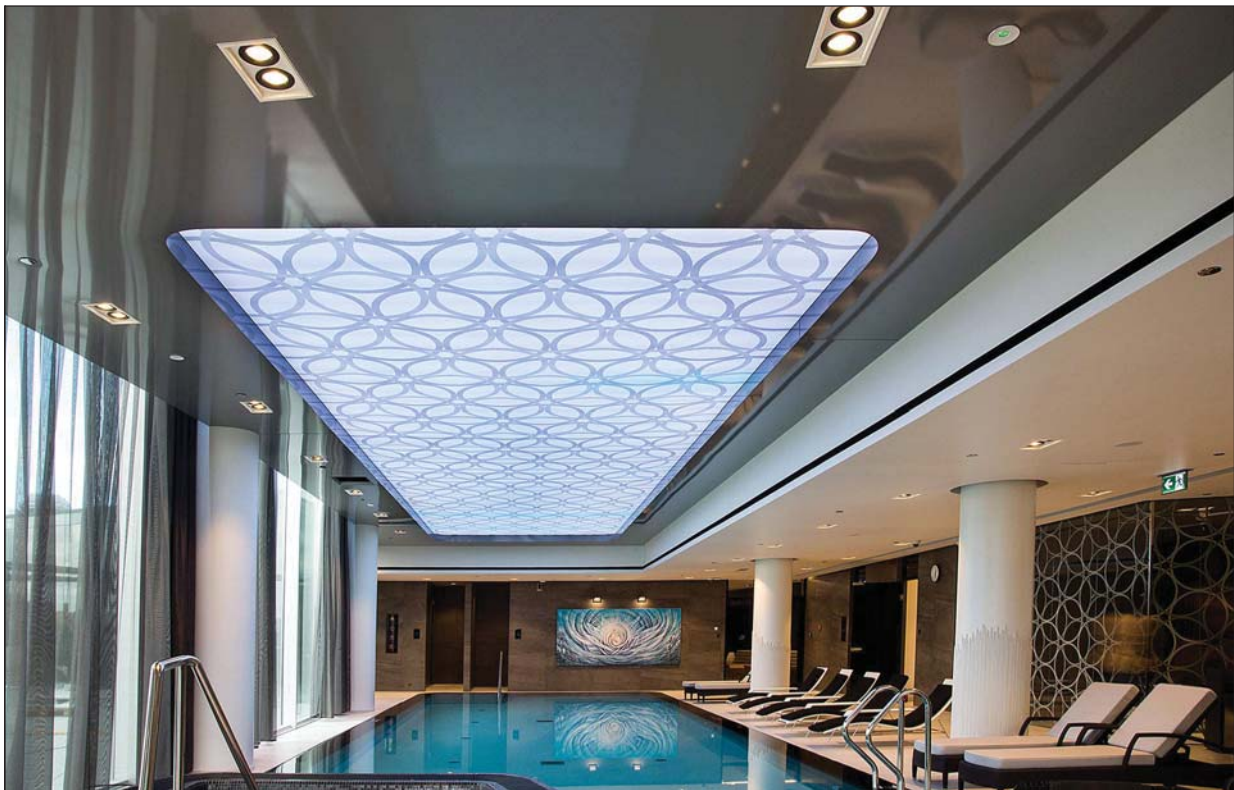


Tensoled _ Ceiling



PRINTED CEILING

Printed Ceiling uses CMYK color high-quality 5m wide UV printer. Print can be applied to different stretch ceiling materials. Does not offer print for the materials TT404 and for dark materials. Print can be applied to light-colored materials only. Print on micro-perforated and acoustic materials must be specified and consulted before the order. Print on glossy materials is only on the installer's responsibility because the installation for glossy printed ceilings must be done differently. Print on glossy material will be matte finish. Welding on printed ceilings is on the visible side. There can be slight color tone differences between the original print file and the print on the stretch ceiling. The minimum quality for print file is 300 DPI.



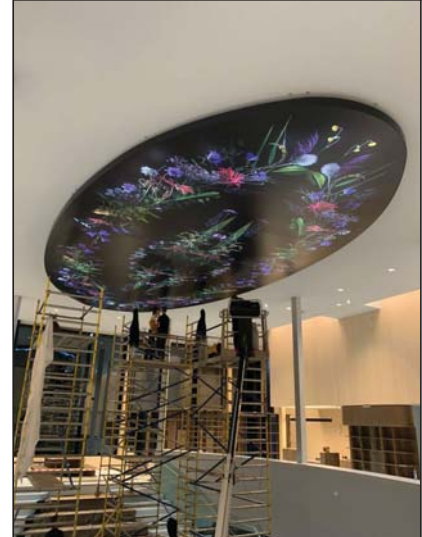


VisualTech Group

Tensoled _ Ceiling

TENSOLED

PRINTED CEILING





CEILING / TECHNICAL PARAMETERS

LAQUERED

Being used	Local apartments, pools, bars, commercial buildings, hospitals, schools, children's gardens
Fire classification	Bs-1 d0 Bs-2 d0
Thickness	0,170 mm ± 10%
Weight in m ²	240 g ±5%
Growth of microorganisms	No Biocide substance used
Surface gloss	90%
Dimension stability	-20 C / +55 C
Width / Largeur / Breite	150 cm - 200 cm
Tensile strain at break	MD 250 / MC 280

TRANSLUCENT

Being used	Local apartments, pools, bars, commercial buildings, hospitals, schools, children's gardens
Fire classification	Bs-1 d0 / Bs-2 d0
Thickness	0,170 mm ± 10%
Weight in m ²	240 g ±5%
Growth of microorganisms	No Biocide substance used
Light transmission	30%-68%
Dimension stability	-20 C / +55 C
Width / Largeur / Breite	200 cm - 240 cm
Tensile strain at break	MD 250 / MC 280

SATIN

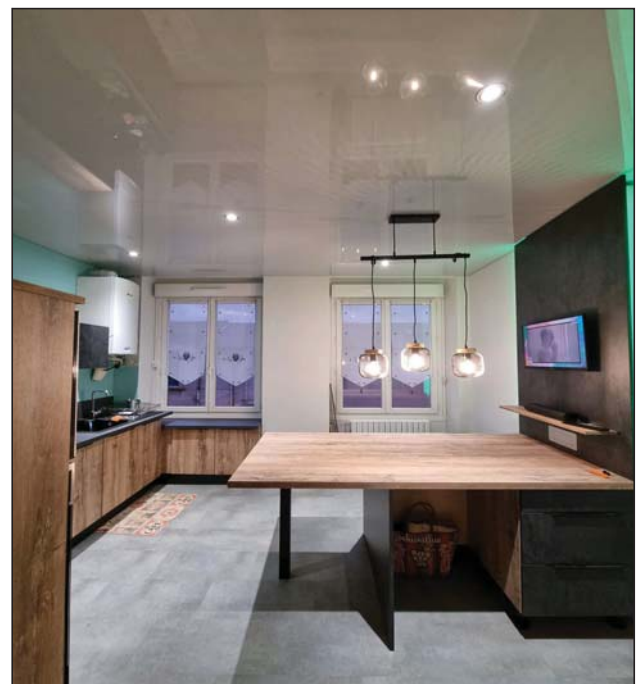
Being used	Local apartments, pools, bars, commercial buildings, hospitals, schools, children's gardens
Fire classification	Bs-1 d0 Bs-2 d0
Thickness	0,170 mm ± 10%
Weight in m ²	240 g ±5%
Growth of microorganisms	No Biocide substance used
Surface gloss	10%
Dimension stability	-20 C / +55 C
Width / Largeur / Breite	200 cm
Tensile strain at break	MD 250 / MC 280

METALLIC

Being used	Local apartments, pools, bars, commercial buildings, hospitals, schools, children's gardens
Fire classification	Bs-2 d0
Thickness	0,170 mm ± 10%
Weight in m ²	240 g ±5%
Growth of microorganisms	No Biocide substance used
Surface gloss	65%
Dimension stability	-20 C / +55 C
Width / Largeur / Breite	130 cm - 200 cm
Tensile strain at break	MD 250 / MC 280

MATT

Being used	Local apartments, pools, bars, commercial buildings, hospitals, schools, children's gardens
Fire classification	Bs-2 d0
Thickness	0,170 mm ± 10%
Weight in m ²	240 g ±5%
Growth of microorganisms	No Biocide substance used
Surface gloss	5%
Dimension stability	-20 C / +55 C
Width / Largeur / Breite	200 cm
Tensile strain at break	MD 250 / MC 280





TENSOLED

CEILING COLOR/LAQUERED

		TL-895 Solaire Bs-2 d0 ✓ 90% ✓ 200 cm
		TL-814 Shanse Bs-1 d0 ✓ 90% ✓ 200 cm
		TL-890 Beige Bs-1 d0 ✓ 90% ✓ 150/200 cm
		TL-823 Gala Bs-2 d0 ✓ 90% ✓ 200 cm
		TL-818 Mastic Bs-1 d0 ✓ 90% ✓ 200 cm
		TL-820 Punch Bs-2 d0 ✓ 90% ✓ 200 cm
		TL-859 Solino Bs-1 d0 ✓ 90% ✓ 200 cm
		TL-860 Citron Bs-1 d0 ✓ 90% ✓ 200 cm
		TL-850 Sun Bs-1 d0 ✓ 90% ✓ 200 cm
		TL-824 Floriss Bs-1 d0 ✓ 90% ✓ 200 cm
		TL-822 Orange Bs-1 d0 ✓ 90% ✓ 200 cm
		TL-838 Cherry Bs-2 d0 ✓ 90% ✓ 200 cm
		TL-840 Bordo Bs-2 d0 ✓ 90% ✓ 200 cm
		TL-837 Vita Bs-2 d0 ✓ 90% ✓ 200 cm
		TL-810 Purple Bs-2 d0 ✓ 90% ✓ 200 cm
		TL-819 Coral Bs-2 d0 ✓ 90% ✓ 200 cm
		TL-849 Peche Bs-2 d0 ✓ 90% ✓ 200 cm
		TL-836 Azale Bs-1 d0 ✓ 90% ✓ 200 cm
		TL-813 Magenta Bs-1 d0 ✓ 90% ✓ 200 cm

		TL-857 Toro Bs-1 d0 ✓ 90% ✓ 200 cm
		TL-854 Rock Bs-1 d0 ✓ 90% ✓ 200 cm
		TL-821 Mangue Bs-1 d0 ✓ 90% ✓ 200 cm
		TL-898 Lilas Bs-2 d0 ✓ 90% ✓ 150 cm
		TL-803 Marsala Bs-1 d0 ✓ 90% ✓ 200 cm
		TL-100 Alpine White Bs-1 d0 ✓ 90% ✓ 200 cm
		TL-801 Blanc Super Bs-1 d0 ✓ 90% ✓ 150/200 cm
		TL-808 Nelson Bs-1 d0 ✓ 90% ✓ 200 cm
		TL-802 Blue Bs-2 d0 ✓ 90% ✓ 200 cm
		TL-861 Bizmot Bs-1 d0 ✓ 90% ✓ 200 cm
		TL-805 Laguna Bs-2 d0 ✓ 90% ✓ 200 cm
		TL-844 Night Bs-2 d0 ✓ 90% ✓ 200 cm
		TL-830 Marine Bs-2 d0 ✓ 90% ✓ 200 cm
		TL-807 Ocean Bs-2 d0 ✓ 90% ✓ 200 cm
		TL-806 Saphir Bs-2 d0 ✓ 90% ✓ 200 cm
		TL-855 Vosges Bs-2 d0 ✓ 90% ✓ 150 cm
		TL-892 Pacifique Bs-2 d0 ✓ 90% ✓ 150 cm
		TL-880 Royal Grey Bs-2 d0 ✓ 90% ✓ 200 cm
		TL-881 Cappuccino Bs-2 d0 ✓ 90% ✓ 200 cm

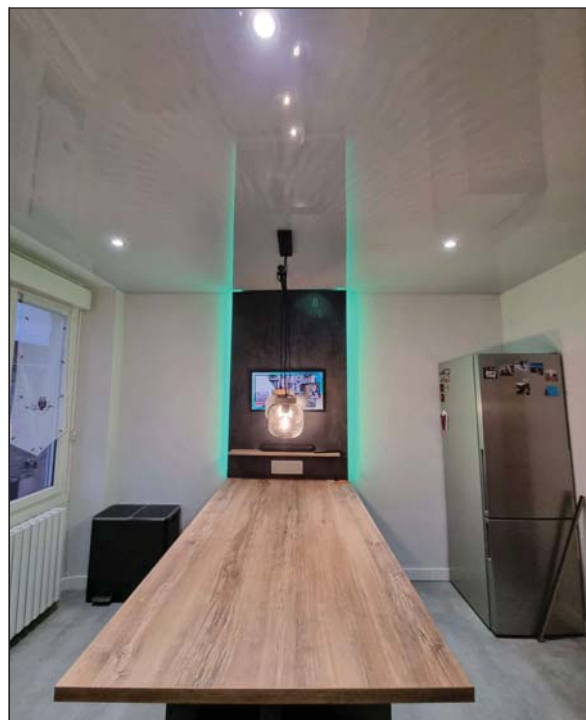


CEILING COLOR/LAQUERED

		TL-897 Stone Bs-2 d0 ✓ 90% ✓ 150/200 cm
		TL-864 Roma Bs-2 d0 ✓ 90% ✓ 200 cm
		TL-811 Granit Bs-1 d0 ✓ 90% ✓ 200 cm
		TL-872 Metro Bs-1 d0 ✓ 90% ✓ 200 cm
		TL-891 Perle Bs-1 d0 ✓ 90% ✓ 200 cm
		TL-812 Gris Bs-2 d0 ✓ 90% ✓ 200 cm
		TL-853 Onyx Bs-2 d0 ✓ 90% ✓ 200 cm
		TL-800 Noir Bs-2 d0 ✓ 90% ✓ 200 cm
		TL-866 Espresso Bs-2 d0 ✓ 90% ✓ 200 cm
		TL-888 Kaffee Bs-2 d0 ✓ 90% ✓ 200 cm
		TL-817 Chocolate Bs-2 d0 ✓ 90% ✓ 200 cm
		TL-865 Porto Bs-2 d0 ✓ 90% ✓ 200 cm
		TL-841 Grenat Bs-2 d0 ✓ 90% ✓ 200 cm
		TL-816 Matiss Bs-1 d0 ✓ 90% ✓ 200 cm
		TL-863 Capri Bs-1 d0 ✓ 90% ✓ 200 cm
		TL-825 Absent Bs-2 d0 ✓ 90% ✓ 200 cm
		TL-845 Nephrite Bs-2 d0 ✓ 90% ✓ 200 cm
		TL-831 Green Bs-1 d0 ✓ 90% ✓ 200 cm
		TL-827 Amazone Bs-1 d0 ✓ 90% ✓ 200 cm

		TL-847 Golf Bs-1 d0 ✓ 90% ✓ 200 cm
		TL-846 Caraibe Bs-1 d0 ✓ 90% ✓ 200 cm
		TL-842 Petrole Bs-1 d0 ✓ 90% ✓ 200 cm
		TL-893 Amarante Bs-1 d0 ✓ 90% ✓ 200 cm
		TL-828 Lazurit Bs-1 d0 ✓ 90% ✓ 200 cm
		TL-833 Pole Bs-2 d0 ✓ 90% ✓ 200 cm

	Fireproof
	Acoustic
	Light transmission
	Width
	Reflection





VisualTech Group

TENSOLED

CEILING COLOR/SATIN

		TS-707 Iris Bs-1 d0 ✓ 10% ✓ 200 cm
		TS-722 Steppe Bs-2 d0 ✓ 10% ✓ 200 cm
		TS-718 Yell Bs-2 d0 ✓ 10% ✓ 200 cm
		TS-723 Pink Bs-2 d0 ✓ 10% ✓ 200 cm
		TS-709 Desert Bs-1 d0 ✓ 10% ✓ 200 cm
		TS-721 Petunia Bs-1 d0 ✓ 10% ✓ 200 cm
		TS-708 Begonia Bs-2 d0 ✓ 10% ✓ 200 cm
		TS-710 Magnolia Bs-2 d0 ✓ 10% ✓ 200 cm
		TS-713 Crocus Bs-2 d0 ✓ 10% ✓ 200 cm
		TS-712 Spring Bs-2 d0 ✓ 10% ✓ 200 cm
		TS-706 Cyclamen Bs-2 d0 ✓ 10% ✓ 200 cm
		TS-711 Nautic Bs-1 d0 ✓ 10% ✓ 200 cm
		TS-717 Aqua Bs-1 d0 ✓ 10% ✓ 200 cm
		TS-725 Fianit Bs-2 d0 ✓ 10% ✓ 200 cm
		TS-726 Meteorite Bs-1 d0 ✓ 10% ✓ 200 cm
		TS-727 Rafaela Bs-2 d0 ✓ 10% ✓ 200 cm
		TS-728 Matrix Bs-2 d0 ✓ 10% ✓ 200 cm

		TS-701 Neige Premium Bs-1 d0 ✓ 10% ✓ 200 cm
		TS-703 Bio Pruf Bs-1 d0 ✓ 10% ✓ 200 cm
		TS-719 Flora Bs-1 d0 ✓ 10% ✓ 200 cm
		TS-704 Vanile Bs-2 d0 ✓ 10% ✓ 200 cm
		TS-705 Rose Bs-2 d0 ✓ 10% ✓ 200 cm
		TS-715 Elefant Bs-1 d0 ✓ 10% ✓ 200 cm
		TS-714 Vulcano Bs-1 d0 ✓ 10% ✓ 200 cm
		TS-740 Oleander Bs-1 d0 ✓ 10% ✓ 200 cm

	Fireproof
	Acoustic
	Light transmission
	Width
	Reflection





TENSOLED

CEILING COLOR

MATT

		TM-501 Blanc Premium Bs-2 d0 ✓ 5% ✓ 200 cm
		TM-504 Papirus Bs-2 d0 ✓ 5% ✓ 200 cm
		TM-505 Coal Bs-2 d0 ✓ 5% ✓ 200 cm
		TM-503 Gerbera Bs-2 d0 ✓ 5% ✓ 200 cm
		TM-509 Sun Bs-2 d0 ✓ 5% ✓ 200 cm

METALLIC

		TLM-900 Corund Bs-2 d0 ✓ 65% ✓ 200 cm
		TLM-909 Bronze Bs-2 d0 ✓ 65% ✓ 130 cm
		TLM-908 Persia Bs-2 d0 ✓ 65% ✓ 130 cm
		TLM-903 Argent Bs-2 d0 ✓ 65% ✓ 130 cm

TRANSLUCENT

		TT-400 Pure White Bs-1 d0 ✓ 68% ✓ 200 cm
		TT-402 Crystal Bs-2 d0 ✓ 41% ✓ 200 cm
		TT-403 White Bs-1 d0 ✓ 42% ✓ 200 cm
		TT-404 Extra Bs-2 d0 ✓ 30% ✓ 240 cm
		TT-405 Lumi Bs-2 d0 ✓ 47% ✓ 200 cm

MIRROR

		TX35-910 MIRROR SILVER 95% ✓ 130 cm
		TX35-911 MIRROR GOLD 95% ✓ 130 cm
		TX35-912 MIRROR SHADOW 95% ✓ 130 cm

	Fireproof
	Acoustic
	Light transmission
	Width
	Reflection



CEILING

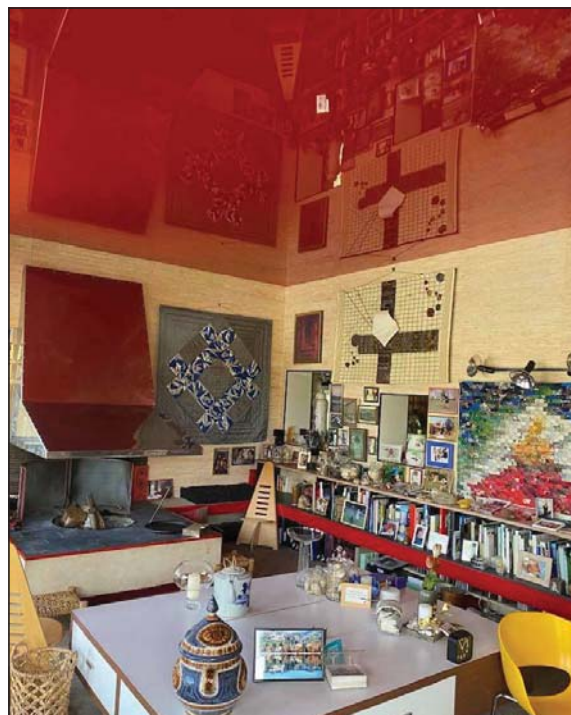
Matt

Satin

Laquered

Translucent

Perforation





VisualTech Group

TENSOLED

STRETCH CEILING POSSIBILITIES



TensoLed _ Ceiling



VisualTech Group

Tensoled _ Ceiling

TENSOLED

STRETCH CEILING POSSIBILITIES





STRETCH CEILING POSSIBILITIES



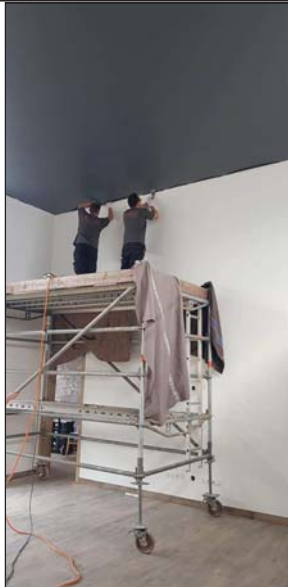


VisualTech Group

Tensoled _ Ceiling

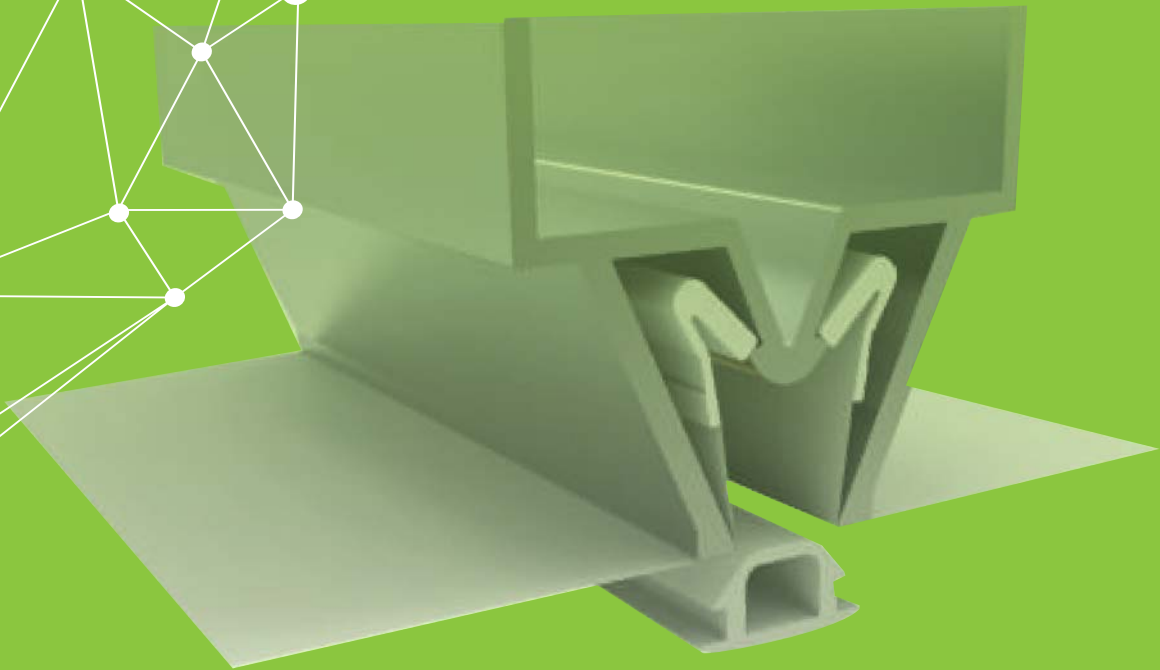
TENSOLED

CEILING ASSEMBLY





TENSOLED
Profiles Catalogue



VisualTech Group



VisualTech Group

TENSOLED

TP01



TP01

Universal aluminum profile used with decoration strip

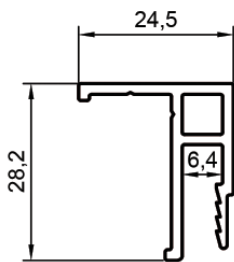
DESCRIPTION

Profile is used with decoration strip for installing stretch ceilings to the wall or to the ceiling.

Anodized profile is recommended to use in the rooms with high humidity levels (bathroom, spa). Recommended area for the installation with this profile is up to 50 m².

Great universal profile that is suitable for creating bent (waves) and round shape elements on the ceiling and walls. The profile frame will be aesthetically hidden behind the stretch material.

PROFILE DIMENSIONS



horizontal and vertical mounting
weight 0,281 kg (1 mt)

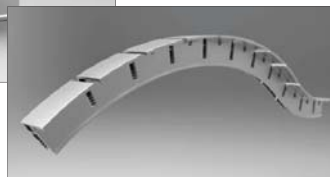
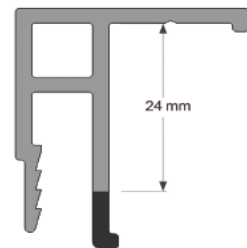


Decoration strip

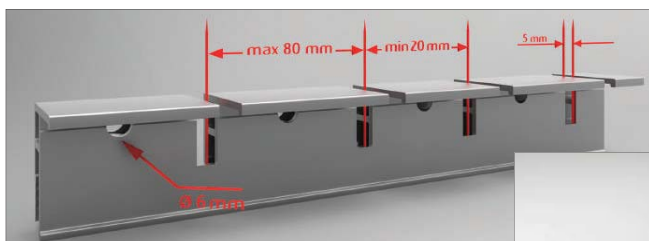
Pre-notched in the factory for easy adaptation on site to rounded and vaulted shapes vertically



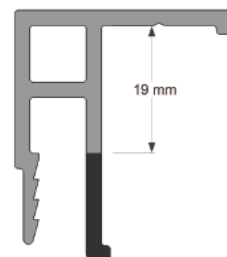
TP01 CUT V



Pre-notched in the factory for easy adaptation on site to rounded and vaulted shape horizontally



TP01 CUT H





VisualTech Group

TENSOLED

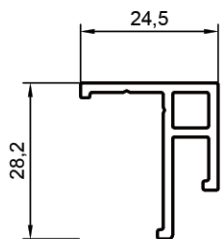
TP01-S



DESCRIPTION

Profile is used without decoration strip for installing stretch ceilings to the wall or ceiling, creating an impression of the ceiling floating in the air. Anodized profile is recommended to use in the rooms with high humidity level (pool, bathroom, spa). Recommended area for installation with this profile is up to 50 m². Given profile visually reduces the defects and irregularities of the walls by 1-2,5 mm. The ceiling benefits from extremely pure lines, without visible tracks.

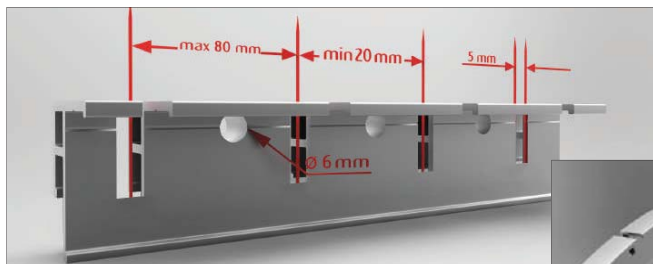
PROFILE DIMENSIONS



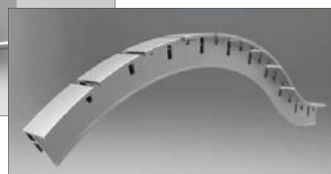
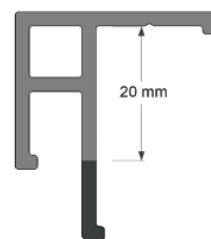
horizontal and vertical mounting
weight 0,24 kg (1 mt)
anodised profile available



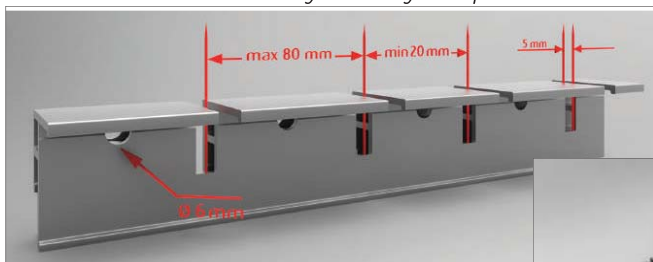
Pre-notched in the factory for easy adaptation on site to rounded and vaulted shapes vertically



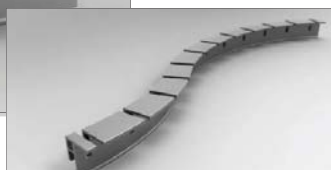
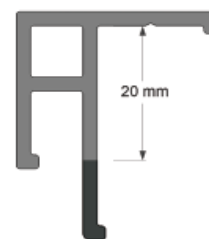
TP01-S CUT V



Pre-notched in the factory for easy adaptation on site to rounded and vaulted shape horizontally



TP01-S CUT H





VisualTech Group

TENSOLED

TP02

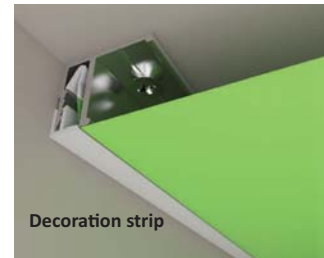


02

Aluminum profile used with decoration strip

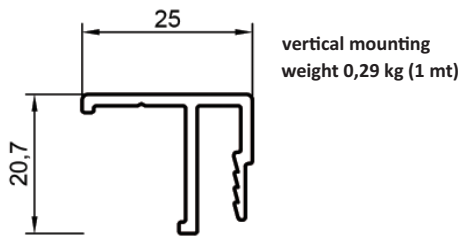
DESCRIPTION

Profile is used with decoration strip for installing stretch ceiling to the ceiling and in certain cases to the wall. Anodized profile is recommended to use in the rooms with high humidity level (pool, bathroom, spa). Recommended area for installation with this profile is up to 50 m².

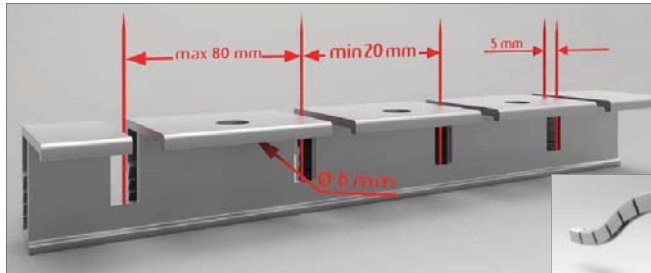


Decoration strip

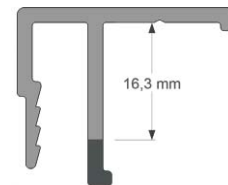
PROFILE DIMENSIONS



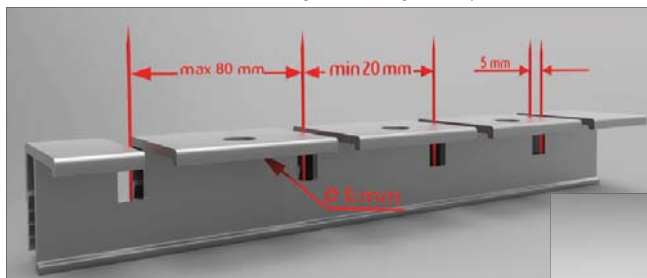
Pre-notched in the factory for easy adaptation on site to rounded and vaulted shape vertically



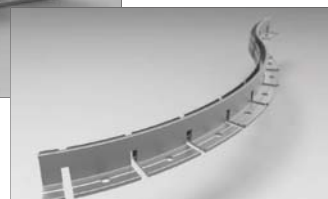
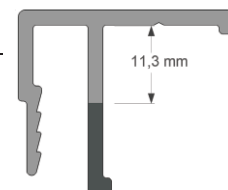
TP02-CUT V



Pre-notched in the factory for easy adaptation on site to rounded and vaulted shape horizontally



TP02-CUT H





VisualTech Group

TENSOLED

TP02-S



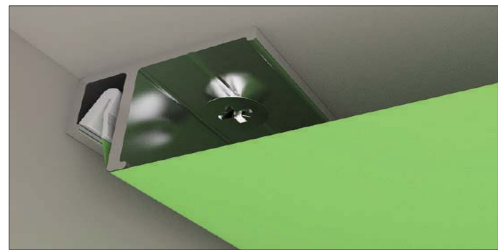
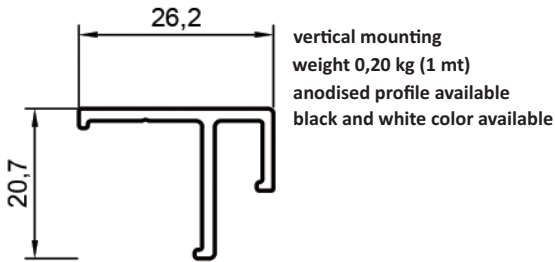
TP02 S

Aluminum profile, is available as anodized, white, black or without decoration strip

DESCRIPTION

Profile is used without decoration strip for installing stretch ceilings to the ceiling and in certain cases to the wall creating the effect of the ceiling floating in the air. Anodized profile is recommended to use in the high humidity rooms. Recommended area for installation with this profile is up to 50m². This profile visually reduces defects and irregularities of the walls by 1-2,5 mm. The ceiling benefits from extremely pure lines, without visible tracks.

PROFILE DIMENSIONS



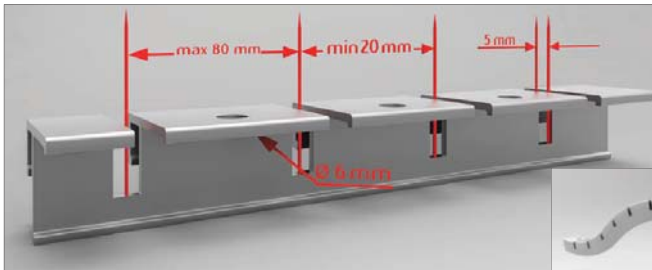
TP02 S-BEND V



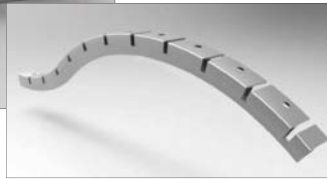
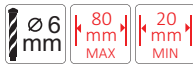
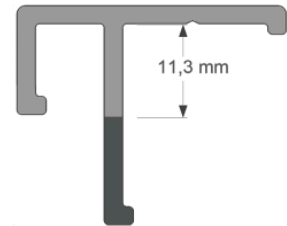
TP02 S-BEND H



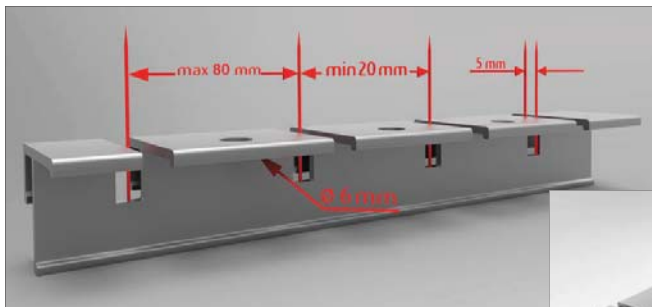
Pre-notched in the factory for easy adaptation on site to rounded and vaulted shape vertically



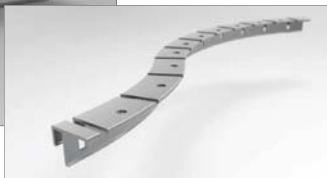
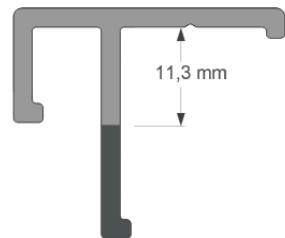
TP02 S-CUT V



Pre-notched in the factory for easy adaptation on site to rounded and vaulted shape horizontally



TP02 S-CUT H



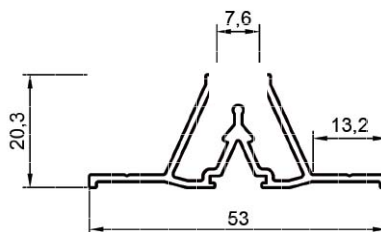


TENSOLED

TP03



PROFILE DIMENSIONS



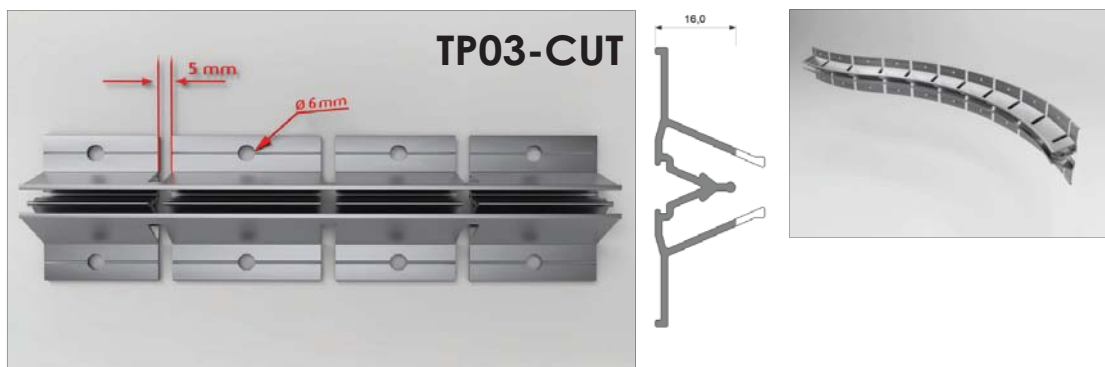
horizontal and vertical mounting
weight 0,45 kg (1 mt)
anodised profile available
black color available (3mt)

DESCRIPTION

Profile is used for installing a stretch ceiling to the wall and ceiling. Used to divide the grand areas of the ceiling to the segments, and for the two-level ceilings. Recommended area for installation with this profile is up to 50 m². Using the profile as a ceiling divisor: Ceilings have to be ordered simultaneously, as there can be tone difference of various film lots. If there will be a time gap between the orders, production might use another roll for the order. Multiple ceilings in the same room must be ordered together.



Pre-notched in the factory for easy adaptation on site to rounded and vaulted shape horizontally



∅ 6 mm	80 mm MAX	20 mm MIN	5 mm MAX
--------	-----------	-----------	----------



VisualTech Group

TENSOLED

TP04



TP04

Aluminum wall profile used with decoration strip

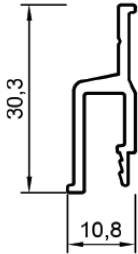
DESCRIPTION

Profile is used with decoration strip for installing stretch ceilings to the wall. Recommended area for installation with this profile is up to 50m².



Decoration strip

PROFILE DIMENSIONS

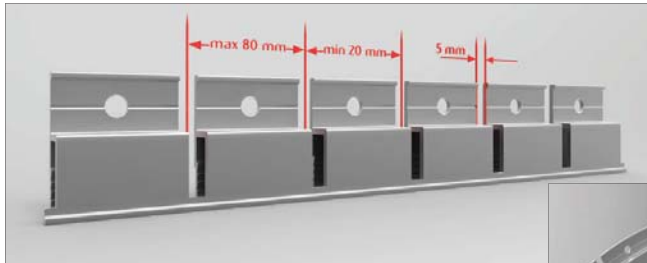


vertical mounting
weight 0,25 kg (1 mt)
anodised profile available

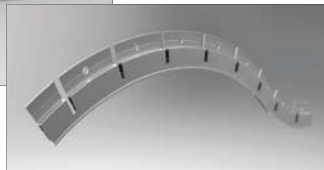
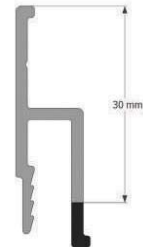


TP04-BEND

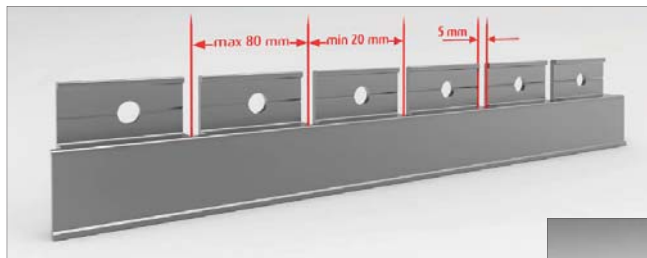
Pre-notched in the factory for easy adaptation on site to rounded and vaulted shape vertically



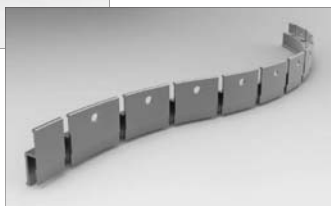
TP04-CUT V



Pre-notched in the factory for easy adaptation on site to rounded and vaulted shape horizontally



TP04-CUT H





VisualTech Group

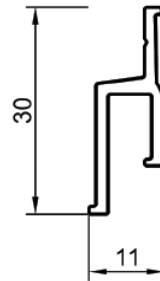
TENSOLED

TP05



Aluminum wall profile used without decoration strip

PROFILE DIMENSIONS



vertical mounting
weight 0,20 kg (1 mt)
anodised profile available
black color available (3mt)

DESCRIPTION

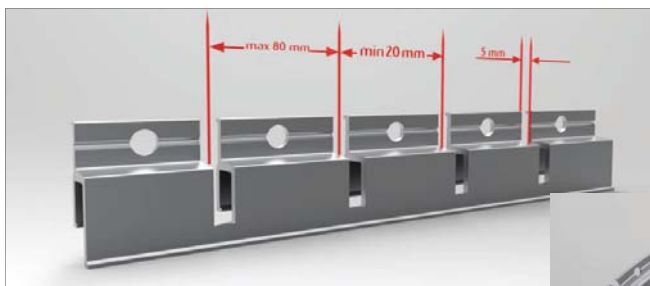
Profile is used without decoration strip for installing stretch ceiling to the wall. Recommended area with this profile is up to 50 m². Given profile visually reduces the defects and irregularities of the walls by 1-2,5 mm. The ceiling benefits from extremely pure lines, without visible tracks.



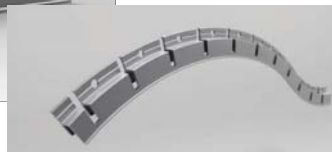
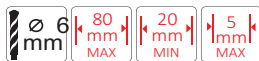
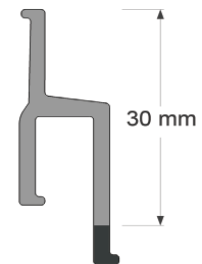
TP05-BENT



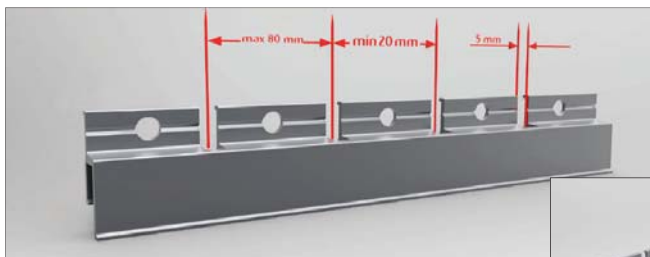
Pre-notched in the factory for easy adaptation on site to rounded and vaulted shape vertically



TP05-CUT V

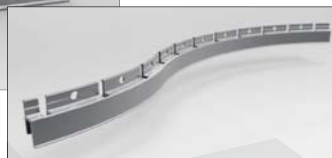


Pre-notched in the factory for easy adaptation on site to rounded and vaulted shape horizontally



TP05-CUT H

6,5 mm





TENSOLED TP06-A

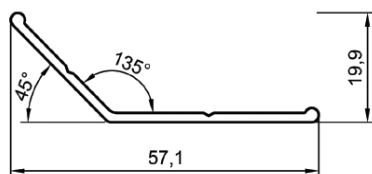


Aluminum profile for installation of the second level

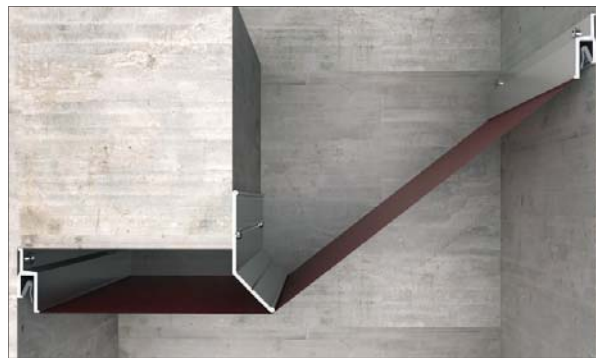
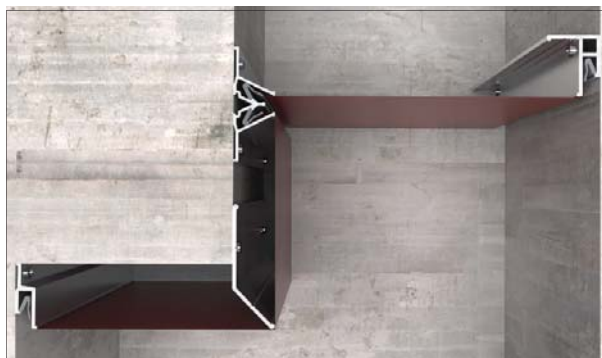
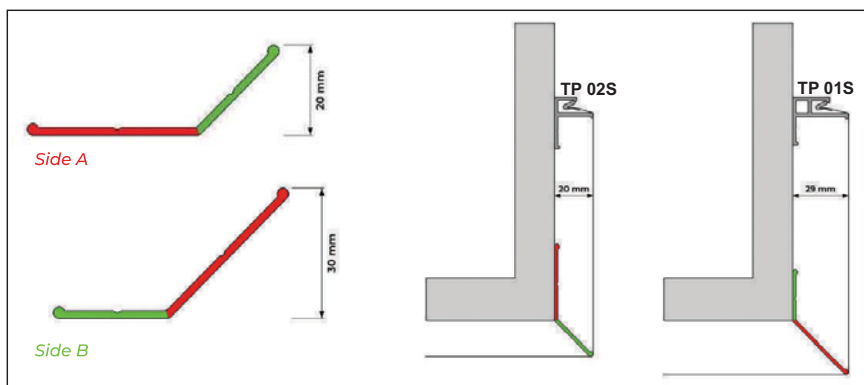
DESCRIPTION

In order to create multi-level ceiling surfaces, without any remarkable height loss, or rectilinear 3D shapes and to cover different parts of the ceiling with stretch ceiling material, we recommend using this profile. The profile is easily connected with other basic line profiles TP 01, TP 02, TP 03, TP 05, TP 07 and TP 11. The installation on the surface of the base ceiling or walls is an easy and effortless process.

PROFILE DIMENSIONS



vertical and horizontal mounting
weight 0,20 kg (1 mt)
anodised profile





VisualTech Group

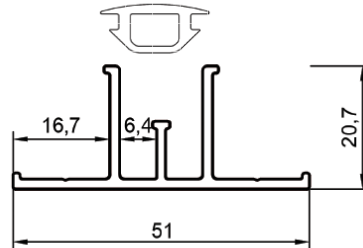
TENSOLED

TP 07-A



Aluminum straight separator

PROFILE DIMENSIONS



vertical and horizontal mounting
weight 0,50 kg (1 mt)
anodised profile

DESCRIPTION

Separator is used for installing stretch ceilings to the wall or ceiling. Used for dividing grand surfaces of the ceiling to segments, and for passage to the second level, creation of the 3D shapes (arc, grotto, dome, and wave). Recommended area for installation with this profile is up to 50 m².

Using the profile as a ceiling divider: Ceilings have to be ordered simultaneously, as there can be tone difference of various film lots. If there will be a time gap between the orders, the production team might use another roll for the order. Multiple ceilings in the same room must be ordered together.

Bended in the factory aluminium profile



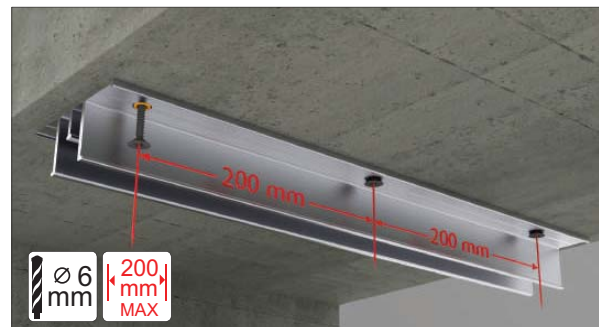
TP 07-A BEND U



TP 07-A BEND D



Installation of profile to the base ceiling using support ceiling system



Fastening the profile to the concrete surface



VisualTech Group

TENSOLED

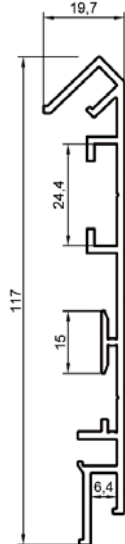
TP08-A

DESCRIPTION

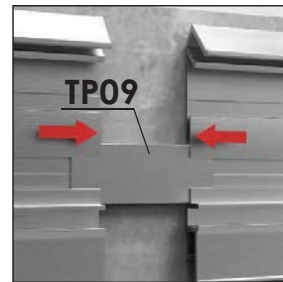
Profile is used for installing transparent stretch ceilings to the wall. Used also for creating an impression of perforated printed light stretch ceilings. The ceiling benefits from extremely pure lines, without visible tracks. The profile design enables the installation of different materials on 3 different layers. When creating corners with this profile, it is necessary to cut it precisely in 45-degree angles and mount together, because this profile can not be bent.



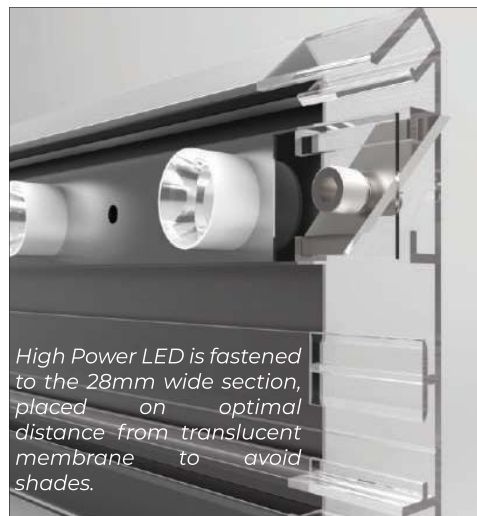
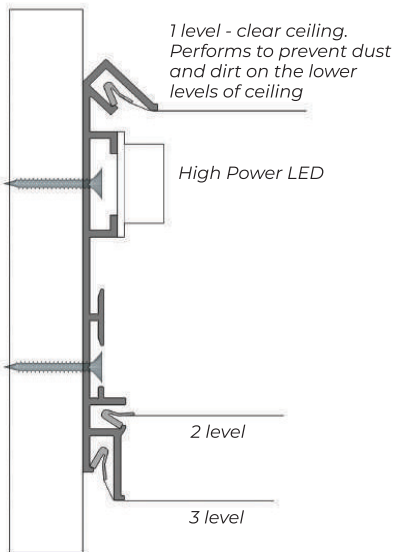
Aluminum light profile



vertical mounting
weight 1,04 kg (1 mt)
anodised profile



TP09 for connection profiles



High Power LED is fastened to the 28mm wide section, placed on optimal distance from translucent membrane to avoid shades.



Fastening the profile to the concrete wall





VisualTech Group

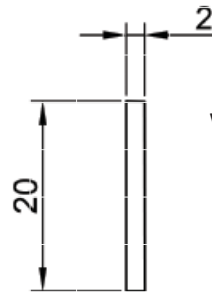
TENSOLED

TP 09



Aluminum bar for connection of profile

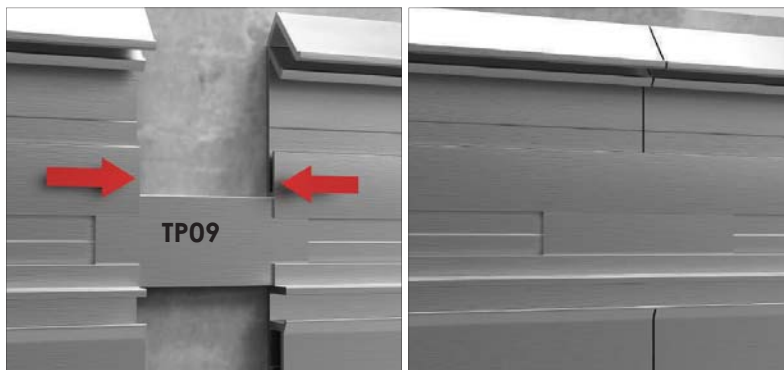
PROFILE DIMENSIONS



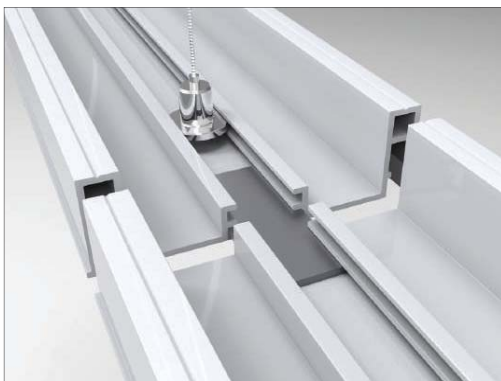
weight 0,006 kg (10cm/pcs)

DESCRIPTION

The profile or rather extension strip is used as a connector between the profiles TP 08, TP 12 and TP 13, in order to stably and firmly connect two profiles with a side length longer than the standard dimensions (the standard dimension is 2,5m). For example, if the two profiles that need to be connected and continued are 5m long (2,5m x 2,5m) then we recommend to use up to 50 cm long connection bar that will hold the profiles securely united.



Connection of profile TP 08



Connection of profile TP 12



Connection of profile TP 13



VisualTech Group

TENSOLED

TP10-A

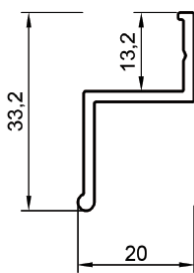


Aluminum profile for installation of the second level.

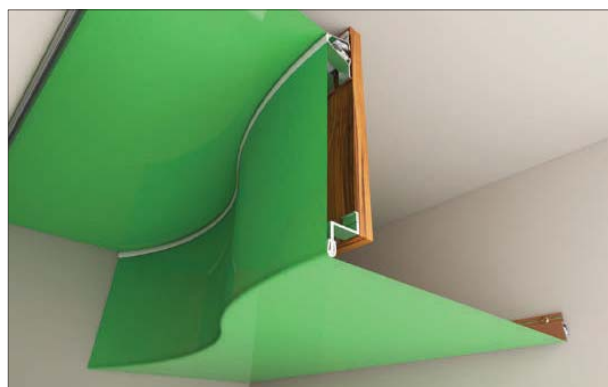
DESCRIPTION

Profile is used for creating curved 3D shapes in horizontal space. Easily connected with profiles Tp01, TP02,TP03,TP05, Tp07 and TP11.

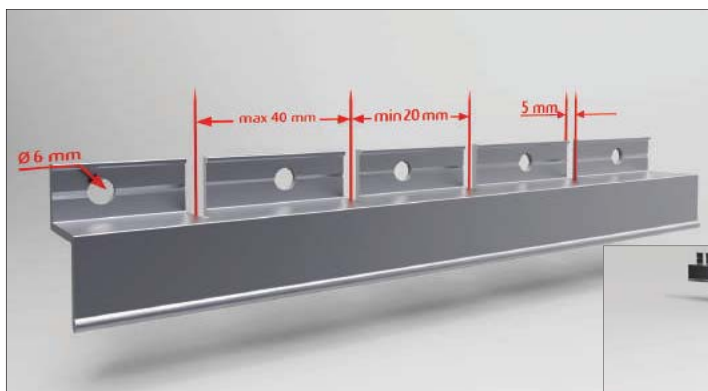
PROFILE DIMENSIONS



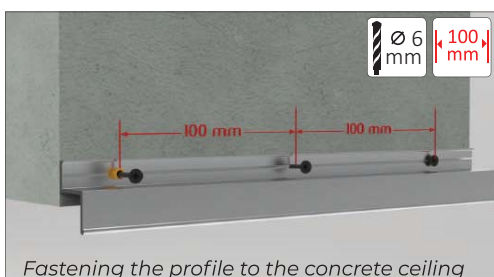
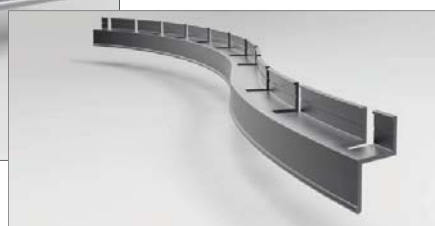
vertical and horizontal mounting
weight 0,124 kg (1 mt)
anodised profile



Pre-notched in the factory for easy adaptation on site to rounded and vaulted shape



TP10-A CUT

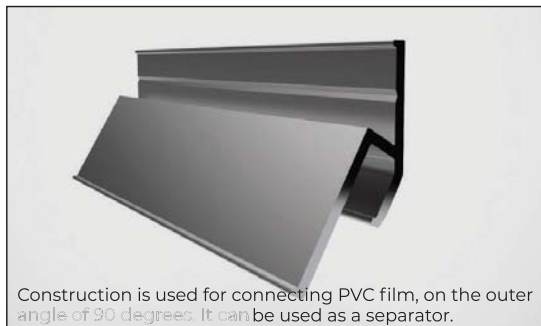


Fastening the profile to the concrete ceiling



TENSOLED

TP 11

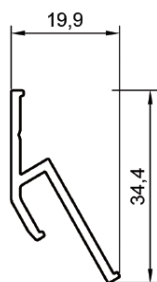


Construction is used for connecting PVC film, on the outer angle of 90 degrees. It can be used as a separator.

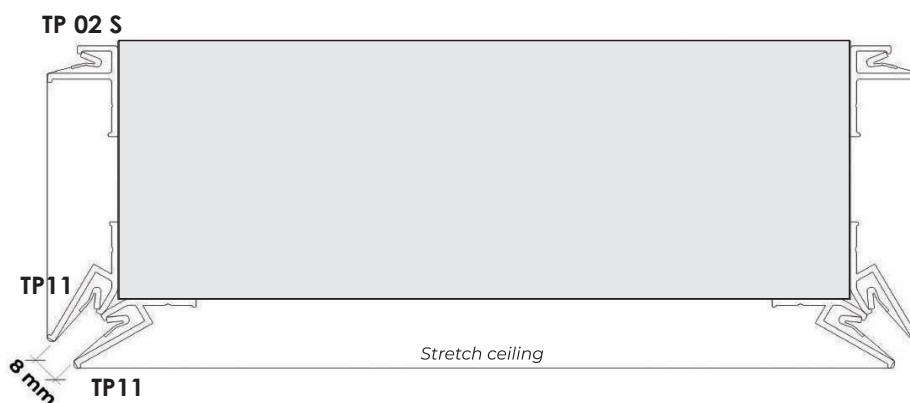
DESCRIPTION

The profile is suitable for creating divided zones of the stretch ceiling material and to create outstanding interior design, where different levels of the ceiling or walls can be covered with various materials. For the easy to use profile to be stably attached it needs to be fixed with screws after every 10 cm. When one would like to use the profile as a ceiling divider or create multiple ceilings in the same room, then it is important to order the ceilings at the same time as there can be slight color differences when comparing various stretch film batches.

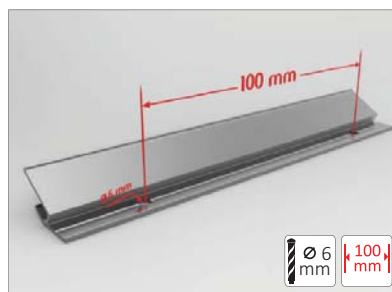
PROFILE DIMENSIONS



vertical mounting
weight 0,12 kg (1 mt)
anodised profile



Fastening the profile



Drilling of the holes for the profile fixing on the straight surfaces



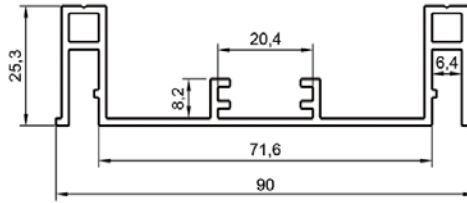
VisualTech Group

TENSOLED TP 12 W



Profile is used for installing stretch ceilings, used for the ceiling with cables.

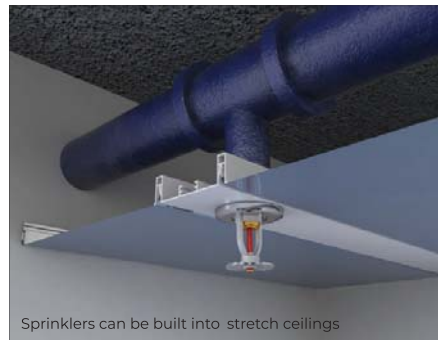
PROFILE DIMENSIONS



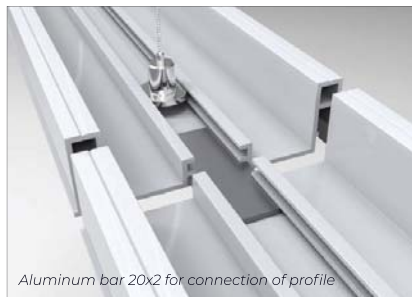
horizontal mounting
weight 0,51 kg (1 mt)
white color available

DESCRIPTION

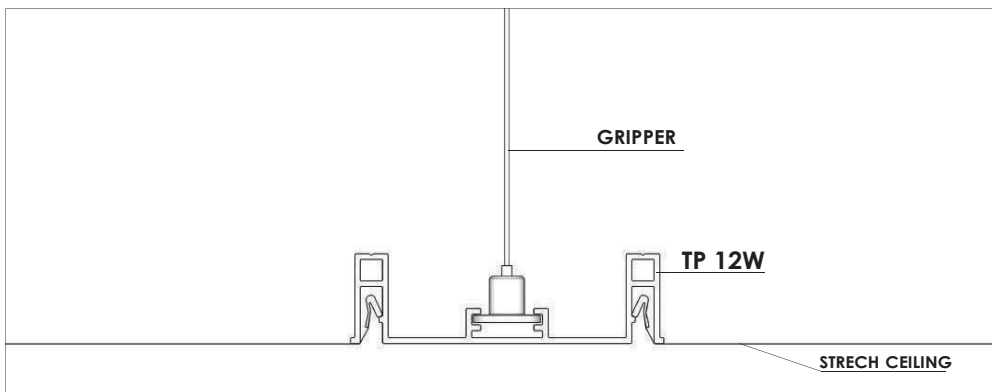
Profile is used for installing stretch ceilings in the rooms, where there are many cables and wires that need to be hidden inside the profile. It is suitable for dividing large ceiling areas, creating different zones, and installing lighting and other elements which require electrical cabling (such as lamps, fire detectors, etc). The recommended surface for the installation with this profile is up to 50 m². When using the profile as a ceiling divider then the ceilings have to be ordered simultaneously, as there can be tone difference in various stretch film batches. If there will be a time gap between the orders, production might use another roll to complete the order. Multiple ceilings in the same room must be ordered together.



Sprinklers can be built into stretch ceilings



Aluminum bar 20X2 for connection of profile





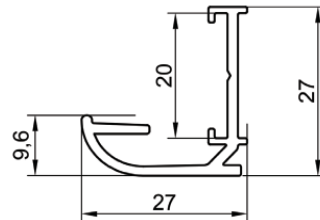
VisualTech Group

TENSOLED TP 13 W

PROFILE DIMENSIONS



Used with visible harpoon



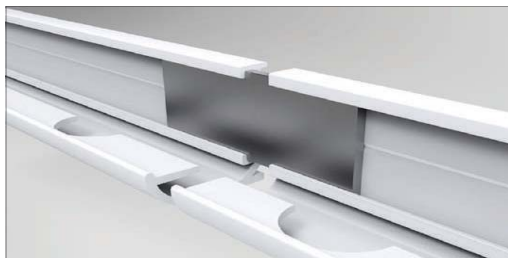
vertical mounting
weight 0,17 kg (1 mt)
white color available

DESCRIPTION

Profile is used for installing stretch ceilings exclusively to the wall. It creates the effect of molding around the perimeter of the stretch ceiling. The profile cannot be bent. The profile will be pre-notched (max 40mm and min 20mm steps) in the factory for an easy installation on site. Used with visible harpoon!

Used in the construction for the installation of stretch ceilings exclusively to the wall. It creates the effect of molding around the perimeter of the stretch ceiling. Milled slots on the edge of the profile provide a better clutch of harpoon and profile.

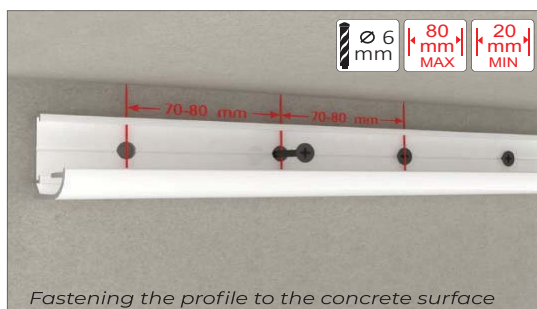
A special section is considered for the junction of the profiles with the special aluminum bar 09.



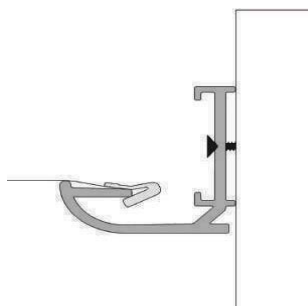
junction of the profiles with the aluminium bar 09.



Milled slots on the edge of the profile provide better clutch of harpoon and profile.



Fastening the profile to the concrete surface





VisualTech Group

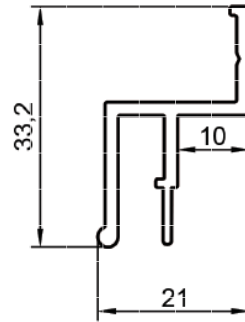
TENSOLED

TP 14



Aluminum wall profile for a montage of the stretch ceilings with LED lighting elements

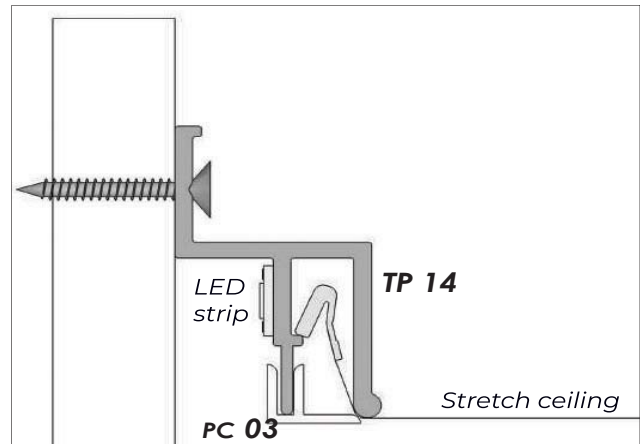
PROFILE DIMENSIONS



vertical mounting
weight 0,164 kg (1 mt)

DESCRIPTION

TP14 is developed for installing stretch ceilings with LED-backlit along the perimeter. LED strip is mounted to the specially intended space with a width of 15 mm on the backside of the profile. This profile is not anodized. Used with TC 03. This profile allows bending also with minimum diameter for bending 150cm (radius 75cm).



Fastening the profile to the concrete ceiling



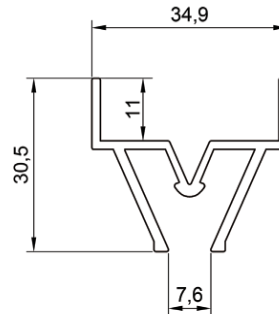
VisualTech Group

TENSOLED TP 15-A



Separator **TP15-A** is designed to divide large stretch ceilings areas.

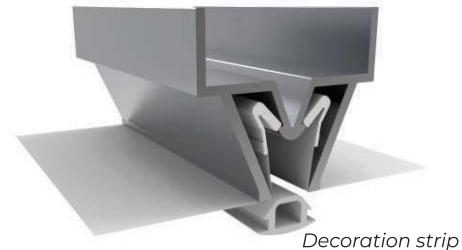
PROFILE DIMENSIONS



horizontal mounting
weight 0,46 kg (1 mt)
anodised profile

DESCRIPTION

Separator **TP15** is designed to divide large stretch ceiling areas, in order to create unified ceiling zones. The profile is also bendable, allowing to create circles with up to 50 cm diameter size. Thanks to the profile design, it doesn't create any noticeable shadow effects on the ceiling that might appear when separator profiles are used in large surfaces covered with backlit stretch material. It can be used independently as well as combined with profile **TP17**. Easy to install, especially when the height from the base ceiling starts from 8cm, then we would recommend special profile fixing equipment - support system.



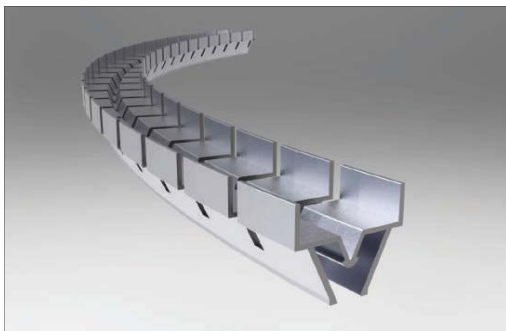
Decoration strip

NOTE

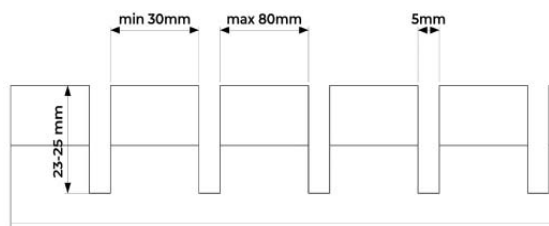
When using the profile as a ceiling divider one has to keep in mind that the ceilings have to be ordered simultaneously, as there can be a tone difference between various stretch film batches. If there will be a time gap between the orders, production might use another roll for the order. This is why we recommend ordering multiple ceilings for the same room at the same time.



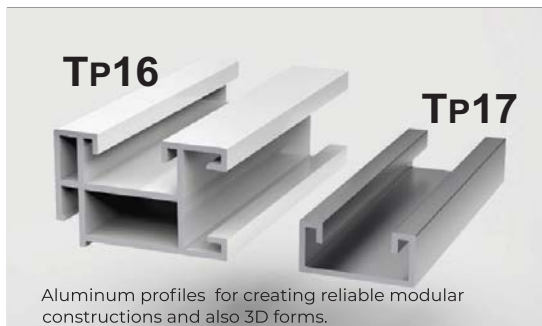
Pre-notched in the factory for easy adaptation on site to rounded and vaulted shape



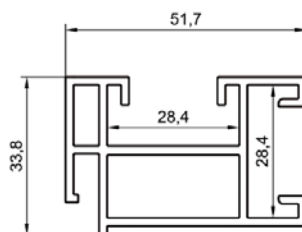
TP 15A-CUT



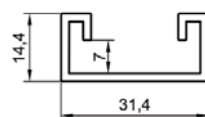
TENSOLED TP16 / TP17



PROFILE DIMENSIONS



weight 1,02 kg (1 mt)
white color available

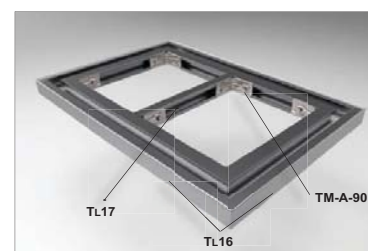
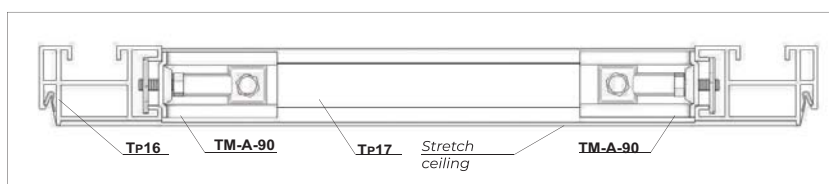
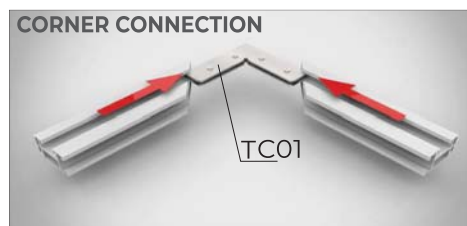
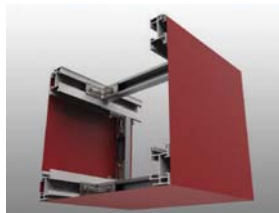


weight 0,34 kg (1 mt)

DESCRIPTION

- Exceptional modular/constructive profile for creating frames in interior design
- This profile is convenient to install and easy to attach with the connection details
- The system enables to have minimum height (33mm) between stretch ceiling and base ceiling

This well-thought system enables to create eye-catching ceiling solutions and aesthetically framed modules. The profiles are strongly fixed with the connection details TM-S, TM-ST, TM-AH-90, and TM-A-90. The stretch ceiling used with this connected profile solution needs to have MINI harpoon, in order for the end result to be visually delightful and for the system to have all its necessary functions in the future – for example the possibility to re-open the ceiling repeatedly in case there is a need for that (water damage or other unexpected cause). Easy corner fixing with TC01 corner mounting elements. Stretch ceilings are made with small reduction using this profile.





VisualTech Group

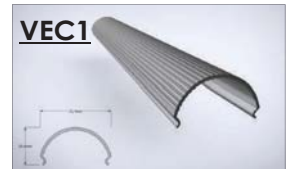
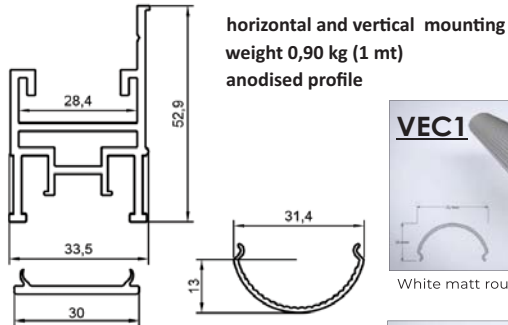
TENSOLED

TP 18



profile light system enables the creation of modern interior designs by using light accents.

PROFILE DIMENSIONS



White matt round diffuser for TP 18

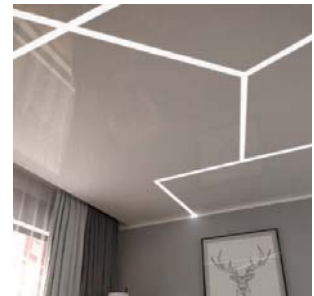


White matt flat diffuser for TP 18

DESCRIPTION

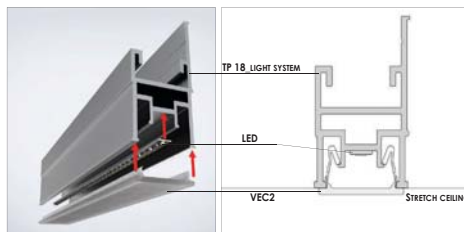
- The profile makes it easy to create asymmetrical and diagonally intersecting lighting solutions on the ceiling or to the walls
- Sharp and correct light lines that can cover the entire ceiling or end in the middle of the ceiling if the desired light pattern requires it
- Possibility to add an accent with either warm or cold light to the room, and make it dimmable to add convenience

Profile Light System enables the creation of modern interior designs by using light accents. The profile enables creating eye-catching light patterns on the walls as well as on the ceiling. High-quality stretch or gypsum board ceilings featuring fully integrated LED lighting will provide a unique and stylish appearance. Continuous light lines can be achieved with this 30mm wide integrated LED lighting. With specially developed diffusers two levels of illumination are possible, direct and scattered light. **Profile Light System** can be installed to create geometric patterns on the ceiling surface or to the walls. **Profile Light System** features an aluminum profile TP 18, an LED light source and a matt diffuser. CAP-1 for the **Profile Light System** has been developed to enable the creation of exciting ceiling designs. With CAP-1, the profile can end anywhere in the stretch ceiling. Standard profile length is 2,5m, but as for a special order, it is possible to make up to 5m. Using the profile as a ceiling divisor: Ceilings have to be ordered simultaneously, as there can be tone difference of various film lots. If there will be a time gap between the orders, production might use another roll for the order. Multiple ceilings in the same room must be ordered together.



CAP 1

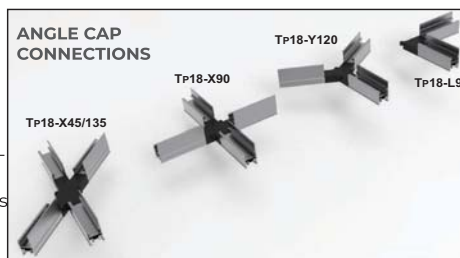
Light System ending CAP- enables to have more variations in design. Now with CAP-1 the lighting line can end in the middle of the stretch ceiling enabling to create a modern lighting solution.



MOUNTING PROFILE TO THE CEILING SUPPORT SYSTEM



The angle-cap connection protruding parts (20 mm long) are attached to the profile construction cavities on each side. The profile is placed (pushed) onto the angle-cap connection with one simple movement. To make the connections more stable and secure use screw fastening. For the result to be fully covered and evenly distributed light lines with no shades and light gaps the 4 profile crossing angle-cap connections have a special recess in the middle of the connection cap, for the LED strips to fit crossing each other. This recess enables the installation of LED strips along the entire length of the profile, instead of cutting it, which may result in unwanted shadows.





VisualTech Group

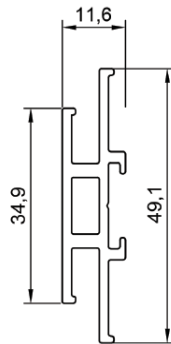
TENSOLED

TP19-A

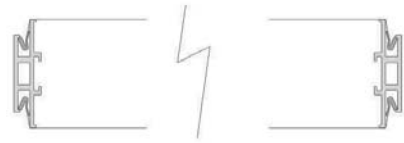
PROFILE DIMENSIONS



system used for creating frames with stretch material



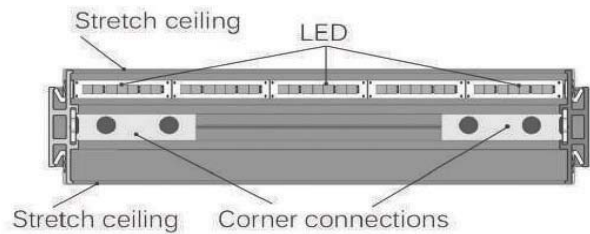
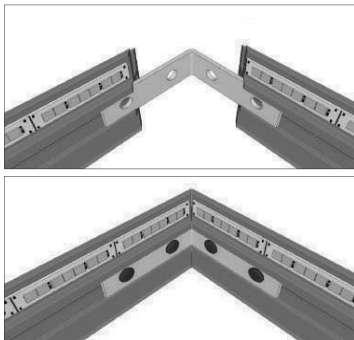
weight 0,50 kg (1 mt)
anodised profile



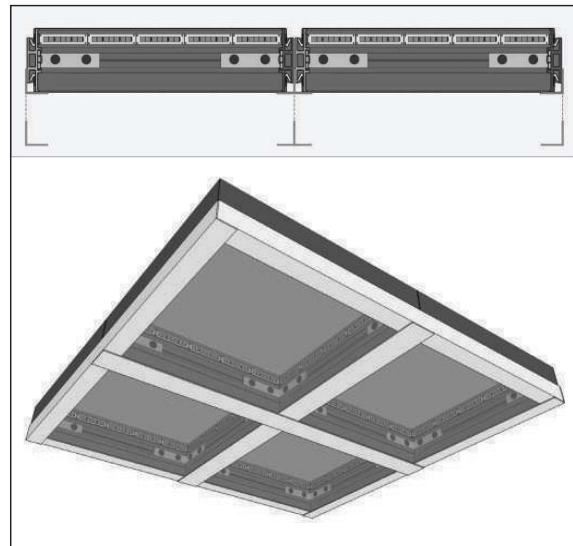
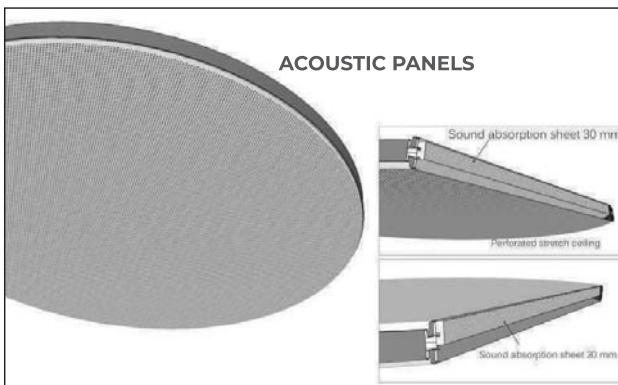
DESCRIPTION

The frames TP19 can be used with Arm ceiling panels. And the frames can also be mounted on the ceiling to hang - in that case a cable fastening will be screwed to the frames outer side. It is also possible to create thin light or acoustic panels. For better sound absorption qualities we recommend using 50mm thick sound absorption sheets. Maximum square module size is 60x60cm, diameter for round panels for non-anodized profiles is maximum 1,59cm. Diameter for anodized round profile can be up to 200cm. Standard profile length 2,5m, special order only for anodized TP19 is 5m long profile.

CORNER FIXING



The frames TP19-A can be used with Arm ceiling panels





VisualTech Group

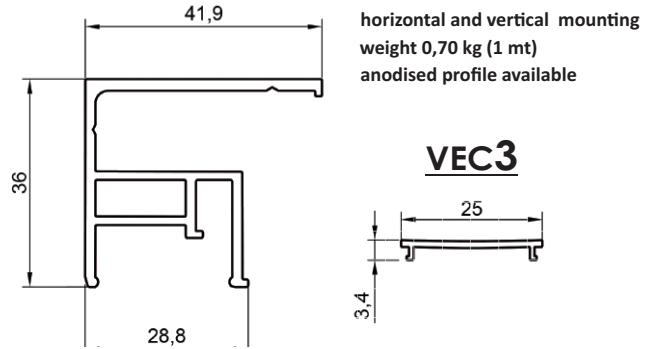
TENSOLED

TP20-A



TP20 Aluminum profile LIGHT system is used for walls and ceilings for creating cornice lighting around the perimeter of the room.

PROFILE DIMENSIONS



DESCRIPTION

- Functional light profile that can be mounted on the ceiling and on the walls, enabling creating perfectly diffused light lines at any part of the ceiling.
- This profile can be combined with other Vecta profiles (TP04, TP05) to create light lines in specific zones of the space
- The profile diffuser evenly distributes the light of the LED spots

20 aluminum profile LIGHT system can be fixed on the walls or on the ceilings for creating perfectly straight cornice lighting around the perimeter of the room or any other built in design element. Light System TP20 + LED and VEC-03 are sold as a complete system, to create the desired light effects.

LED strip models will be seen on the ceiling as separate bright spots. Standard profile length is 2,5m, but special order can be up to 5m long profile. For creating corners (for example at an angle of 90 degrees) the profile needs to be cut in precise angle

INSTALL THE PROFILE TO THE BASE CEILING

Fastening to the wall

Fastening to the ceiling

150 mm 150 mm

For gypsum surfaces

300 mm 300 mm

For concrete surfaces

Ø 6 mm

Recommended screw fixing centers for the TP20 profile are 300 mm for concrete surfaces and 150 mm for gypsum boards. Drill size – 6mm diameter.





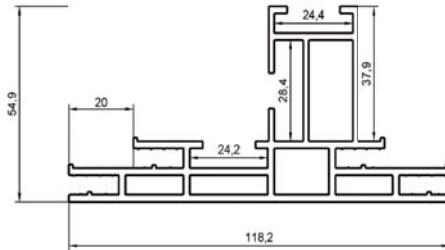
VisualTech Group

TENSOLED TP22-EXP



Create eye-catching light elements, design lamps and light modules that add value to the interior design and have both qualities – practical and aesthetic in one product represented.

PROFILE DIMENSIONS



weight 2,06 kg (1 mt)
anodised profile

TP22-BEND



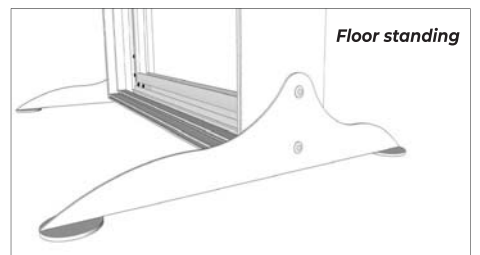
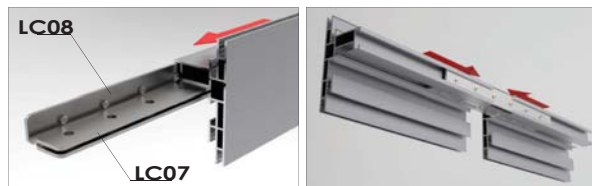
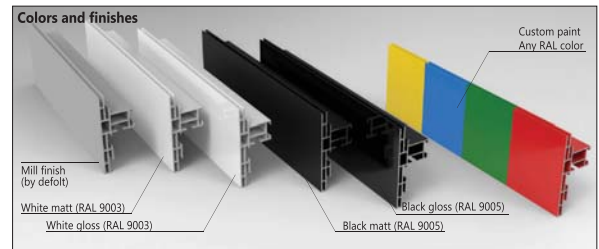
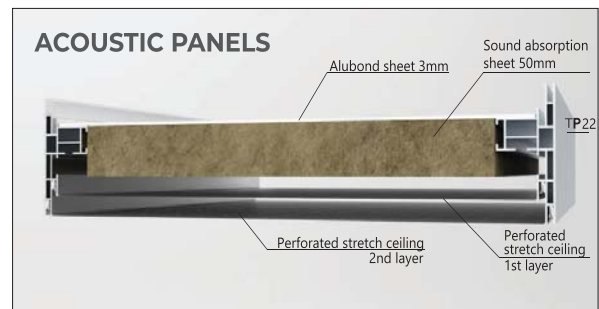
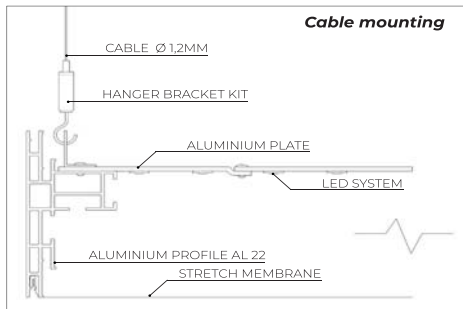
Minimum diameter for bending AL 22 is 90 cm



DESCRIPTION

- Functional modular profile for creating light frames, wall modules and custom made lamps
- Design elements created with this profile can be installed or mounted in 3 different ways: 1) directly to the ceiling, 2) hanging with metal ropes from the ceiling, 3) movable floor stands
- The profile is suitable for creating lighting solutions of different shapes with curved edges
- Can be combined with acoustic stretch material and sound absorption sheet

TP 22 A is a modular system made of profile TP 22, that enables creating frames covered with stretch ceiling material. Used with special fastenings the modules can be attached or hung directly on the ceiling and the modules can also be placed on the floor, when special floor standing elements are attached. To create the modular lights, LED lighting elements can be easily installed. Panels can be used as illuminated or acoustic partition walls, step, and repeat banner, exhibition or information stands and, by design, can be used for other applications that may be specified by clients. The profile has the unique capability of enabling the installation of stretch materials fitted with MINI harpoon. Standard profile length 2,5 m, special order 5m long profile. Smallest angle for TP22 A profile can be 45 degrees. Easy corner fixing with TC01 or TC02 corners. Stretch ceilings are made with small reduction using this profile.





VisualTech Group

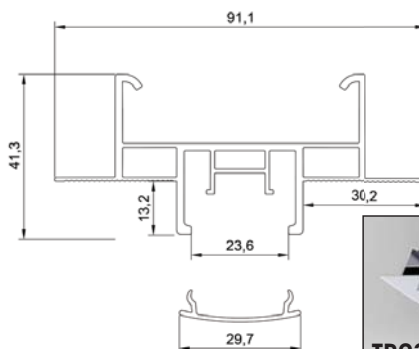
TENSOLED

TP23



aluminum ceiling and wall profile for plasterboard and stretch ceilings 40x91 mm.

PROFILE DIMENSIONS



horizontal and vertical mounting
weight 0,92 kg (1 mt)
anodised profile



DESCRIPTION

Our specific profile TP 23 will give you the opportunity to:

- integrate additional or main light source in the ceiling,
- divide the ceiling into separate parts,
- combine stretch ceiling with gypsum ceiling.

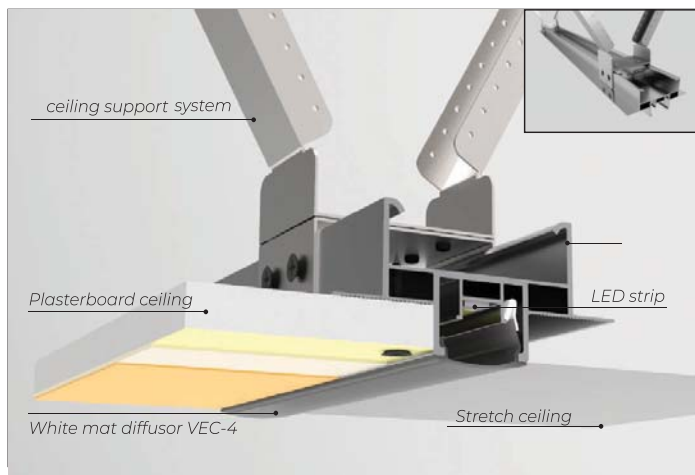
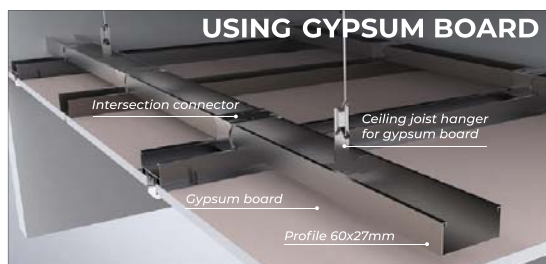
TP23 profile is multifunctional, as it can be used to combine gypsum board and stretch ceiling material in one room. For all installations, the system enables the creation of interior design accents with continuous light lines from the 30mm wide LED strips. Alternative LED strips are available and the installation is completed by the diffuser. Standard profile length 2,5m, special order 5m long profile. The profile is comfortable and easy to install when using special support system and the result is stable.

When used with gypsum board, then the gypsum board should be 12mm or 12,5mm thick, then you can hide screws with gypsum putty and add paint coating on the gypsum surface. Using the profile as a ceiling divisor: Ceilings have to be ordered simultaneously, as there can be tone difference of various film lots. If there will be a time gap between the orders, production might use another roll for the order. Multiple ceilings in the same room must be ordered together.



Advanced angle connections, made of strong engineering plastic - a solution that is designed to make your work smooth and effortless. Creating unique and marveling ceiling solutions with integrated light lines in it has never been so easy to do.

TP23 ending CAP-2 enables to have more variations in design. With CAP-2 the lighting lines can end in the middle of the stretch ceiling or gypsum board enabling to create modern lighting solutions. When making a ceiling drawing with TP23 + CAP-2 in the middle of the ceiling, please take notice that the TP23+CAP-2 must be 4 cm shorter on the drawing than the actual profile with CAP-2. Otherwise, you will have too much harpoon on the actual ceiling. For example, the TP23+CAP-2 is 340cm, then on the drawing, it should be written 236 cm. Before installing the ceiling the CAP-2 must be fastened to the profile with a screw. With the CAP-2 the ceiling installation always starts at CAP-2.





VisualTech Group

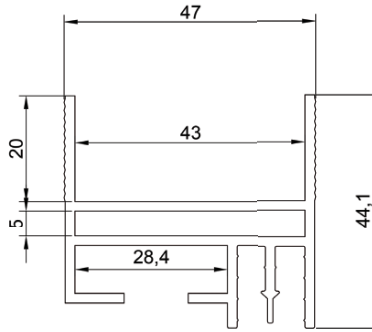
TENSOLED

TP24



Aluminum profile for ceiling traps.
Used with MINI harpoon

PROFILE DIMENSIONS



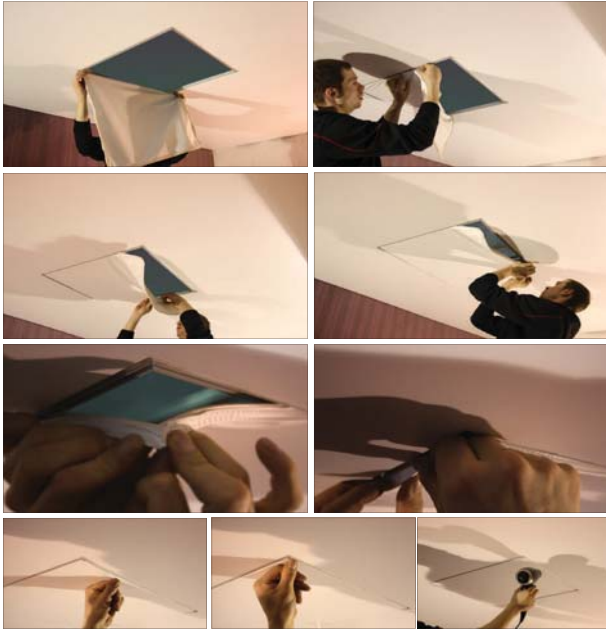
horizontal and vertical mounting
weight 1,03 kg (1 mt)
white color available

DESCRIPTION

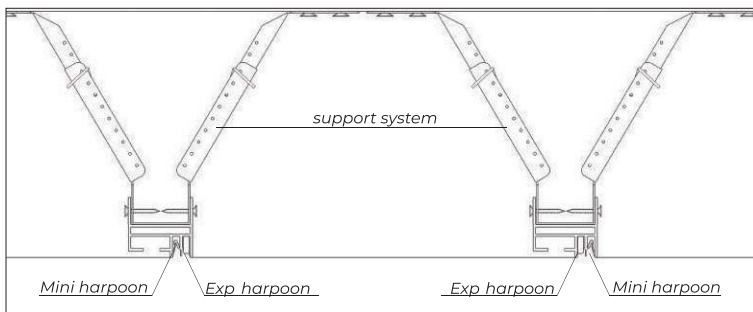
The profile has the unique capability of enabling the installation of stretch materials fitted with MINI harpoon. Standard profile length 2,5m, special order 5m long profile. Construction of custom ceiling traps using special fixings. Easy corner fixing with TC-01 corners. Using the profile as a ceiling divisor: Ceilings have to be ordered simultaneously, as there can be tone difference of various film lots. If there will be a time gap between the orders, production might use another roll for the order. Multiple ceilings in the same room must be ordered together.

- Maximum size of trap-doors is 200cm x 200cm and can be installed into stretch ceiling
- Quick and easy installation and removal of trap-door
- Trap-door can be the same color or different color as the ceiling surrounding it
- Special elastic harpoon along the perimeter of the trap-door ceiling
- No special skills or equipment required for installation or removal of trap-door ceiling

INSTALLATION



CORNER FIXING WITH TC01



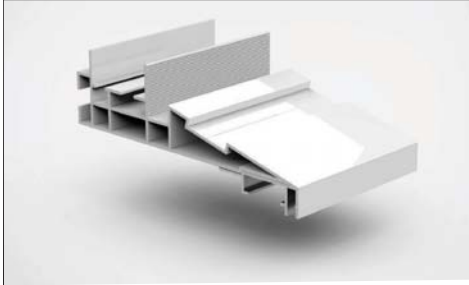
PROFILE INSTALLATION
USING SUPPORT SYSTEM



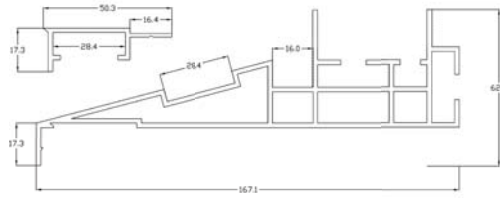
VisualTech Group

TENSOLED

TP25



PROFILE DIMENSIONS



weight 2,54 kg (1 mt)
anodised profile
white color available

DESCRIPTION

TP25 white profile is multifunctional cornice system, which can be used with stretch ceiling or gypsum. LED stripes can be placed directly on the profile in 15 degrees angle from the horizontal line. Side of the cornice is only 17mm which will stay visible. The profile is available in 2,5m and 5m lengths.

TP25 profile minimum recommended fastening is after every 60 cm. With size 42 mm gypsum frames by using screws, needs extra reinforcement with diagonals after every 100cm. When used with other gypsum frames the minimum recommended fastening is after every 40cm and diagonals after every 80cm.

It is also possible to add gypsum on top of the profile, to prevent the light accessing backside of the ceiling and to finish the side of the cornice. TP25 profile can be used with EXP harpoon to provide access behind the stretch ceiling. Used also with MINI harpoon. When used with gypsum board, then the gypsum board should be 12mm or 12,5mm thick, then you can hide screws with gypsum putty and add paint coating on the gypsum surface.

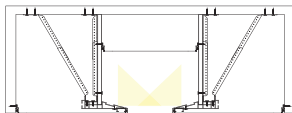
The profile can also be attached straight to the basic ceiling. Easy corner fixing with double TC01 corners.

- Universal product, as it can be used with gypsum and also with stretch ceilings,
- It will create a straight sharp edge,
- A unique profile, that can not be found among other producers products,
- Very easy and quick installation with special profile support system,
- Enhancing and soft moodlighting, where You can see only the light, not the profile itself.

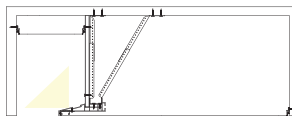
INDIRECT LIGHT EFFECTS:



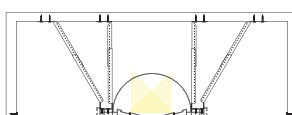
Supplement some visual effects and illusional extra space and height to the room.



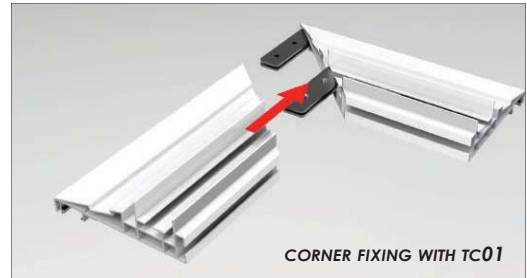
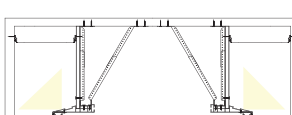
Add elegant indirect lighting to the perimeter of the ceiling, that is a modern way to use light source, that can be unique additional light element.



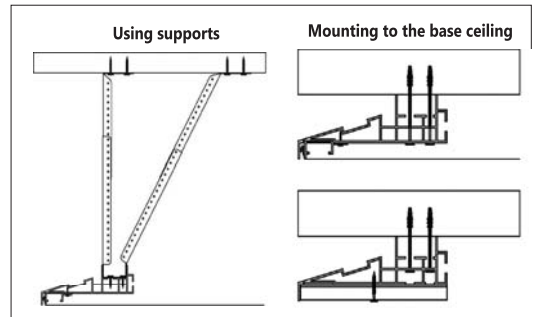
Create fascinating modules, with the soft moodlight in the edges, that can be either pieces of art (with printed, relief or alternative materials) or other stunning decorative details integrated to your ceiling or walls.



Design and build spectacular light lines (max width 30 cm) that would evoke wow effects and make the most pleasing outcome in adding the accent lighting.



CORNER FIXING WITH TC01





VisualTech Group

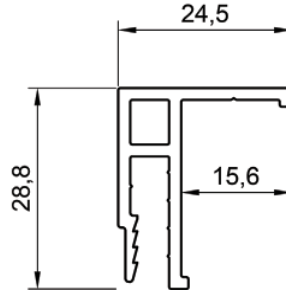
TENSOLED

TP26-A



Aluminum universal profile for ceilings and walls. Used with MINI harpoon or EXP harpoon.

PROFILE DIMENSIONS

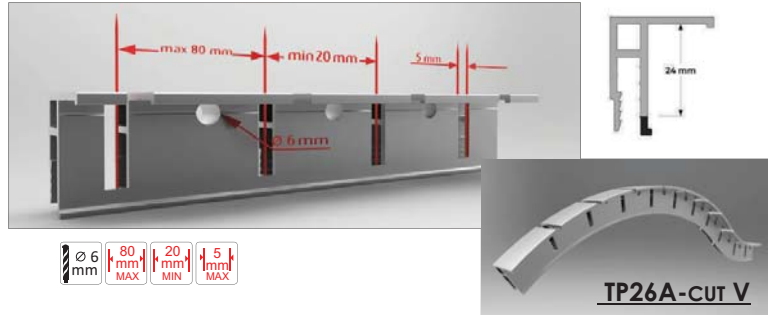


horizontal and vertical mounting
weight 0,30 kg (1 mt)
anodised profile

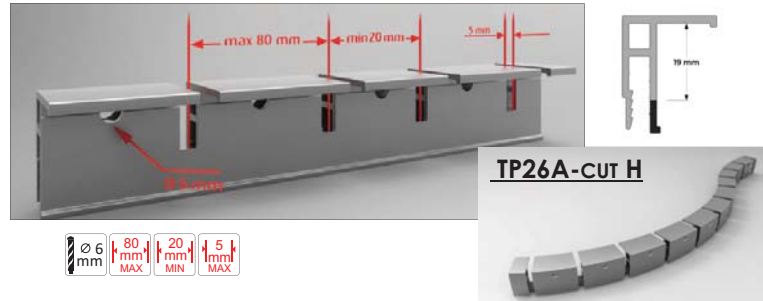
DESCRIPTION

Aluminum universal profile TP26-A for installing stretch ceilings or textile ceilings to the wall or the ceiling. Anodized profile is recommended to use in rooms with high humidity levels. It can also be used outdoors and indoor rooms. Using the profile with MINI harpoon, it is necessary to add decoration strip PC-03. Used with EXP harpoon no decoration strip needed. TP 26-A is available in 2,5 m and 5 m lengths. This profile can be used with a stretch ceiling and other textile materials.

Pre-notched in the factory for easy adaptation on site to rounded and vaulted shapes vertically



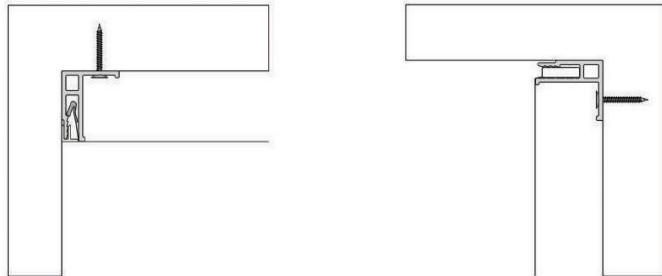
Pre-notched in the factory for easy adaptation on site to rounded and vaulted shape horizontally



Fastening the profile to the concrete ceiling



USING AL 26-A WITH MINI- AND EXP HARPOON



Aluminum universal profile 26-A for stretch ceilings with MINI harpoon. Used together with TC-03.

Aluminum universal profile 26-A for stretch ceilings and textile ceilings with EXP harpoon. Used without TC-03. Maximum recommended size for EXP harpoon stretch ceilings is 150cm x 200cm. Other sizes must be specified by the manufacturer. Not recommended to use for textile ceilings with EXP harpoon, can be used for textile walls.

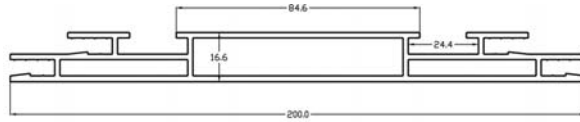


VisualTech Group

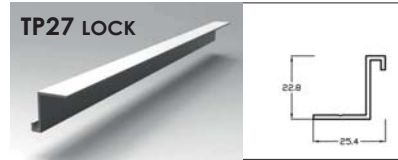
TENSOLED TP27 + TP27 LOCK



PROFILE DIMENSIONS



weight 2,54 kg (1 mt)
anodised profile
white color available

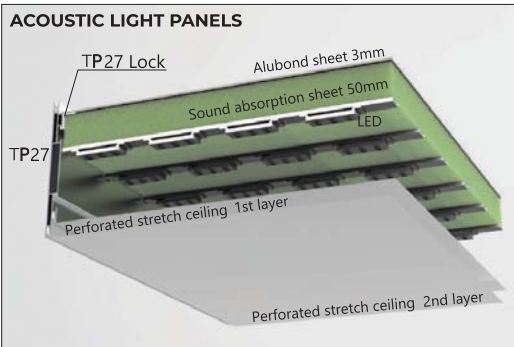


DESCRIPTION

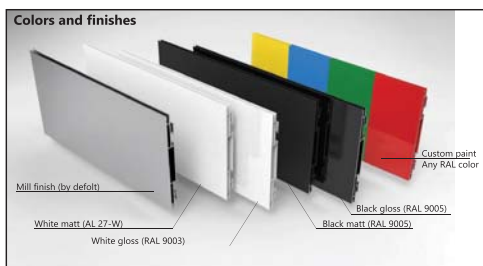
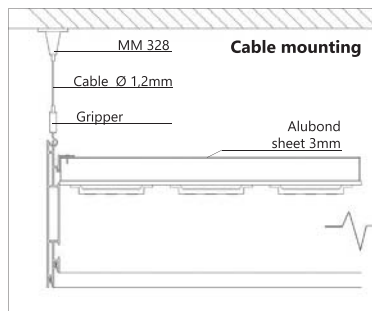
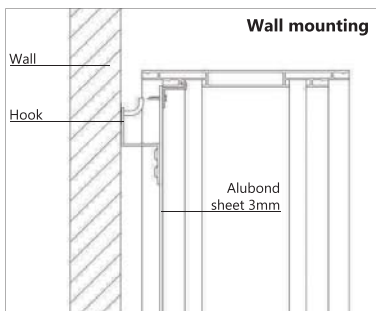
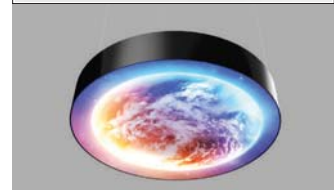
This profile was developed to create an illuminated design without any shadows. TP27 Lock fits on different levels of the TP27 profile and is used for holding backlit led lights on PVC sheet or to hold acoustic sheets. NB! If the frame length is longer than 150 cm, or if the diameter of the lamp is more than 150cm, then we recommend using profile TP17.

The profile advantages are more or less the same as for the profile TP22:

- Functional modular profile for creating evenly diffused light frames, wall modules and tailor made design lamps
- Design elements created with this profile can be installed or mounted in 3 different ways: 1) directly to the ceiling, 2) hanging with metal ropes from the ceiling, 3) movable floor stands
- The profile is suitable for creating lighting solutions of different shapes with curved edges
- Can be combined with acoustic stretch material and sound absorption sheet



Minimum diameter for bending is 90 cm





VisualTech Group

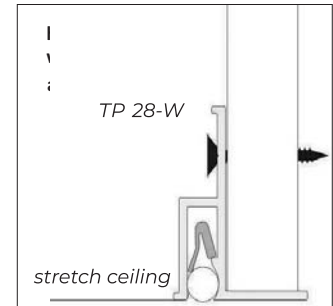
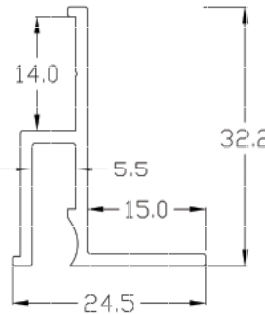
TENSOLED

TP28-W



Used with MINI harpoon

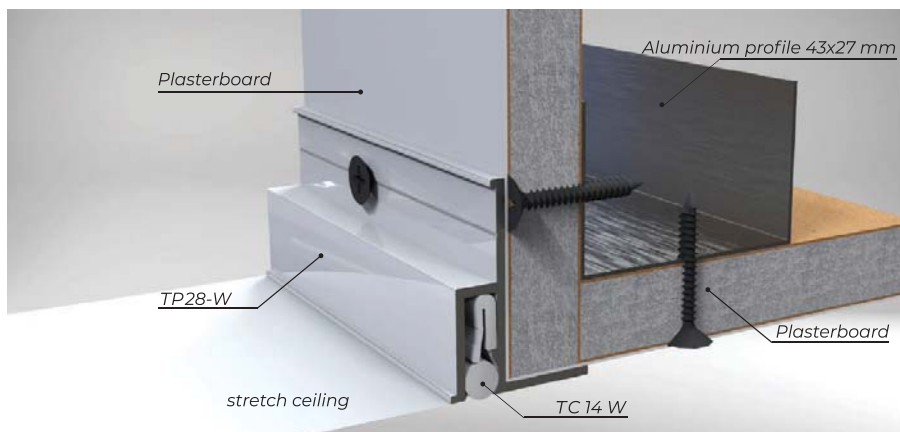
PROFILE DIMENSIONS



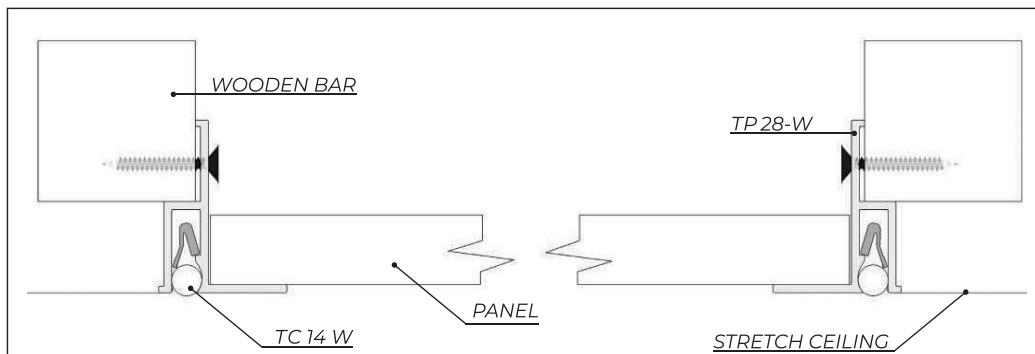
DESCRIPTION

Aluminum profile TP28-W is the classic wall profile. Design specially for the installation of plasterboard and stretch ceiling in the way that both ceilings will be on one level. The profile allows to overlap the corner joint of the gypsum board and creates a smooth edging at the connection point.

vertical mounting
weight 0,29 kg (1 mt)
anodised profile
white color available



Elastic PVC decoration clip TC-14 W with the round cross-section was designed to mask the gap in the lock, it is very easy and convenient to use. The profile has a lock for using the MINI-harpoon. TP 28-W is colored in neutral white semi-mat RAL 9003.

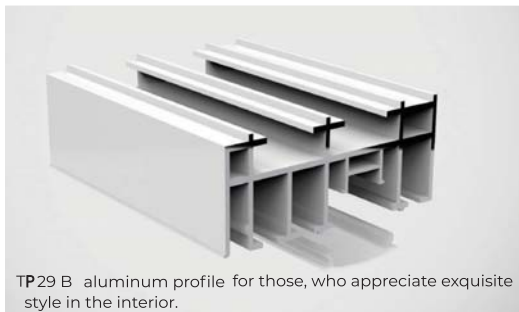




VisualTech Group

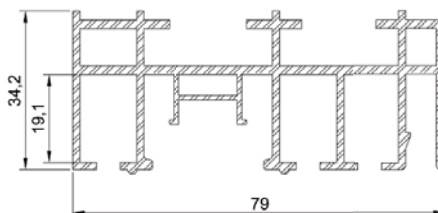
TENSOLED

TP29 B

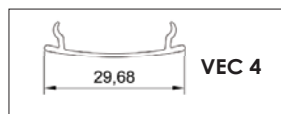


TP 29 B aluminum profile for those, who appreciate exquisite style in the interior.

PROFILE DIMENSIONS



horizontal mounting
weight 2,54 kg (1 mt)
anodised profile
white color available

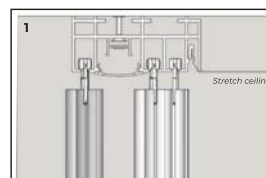
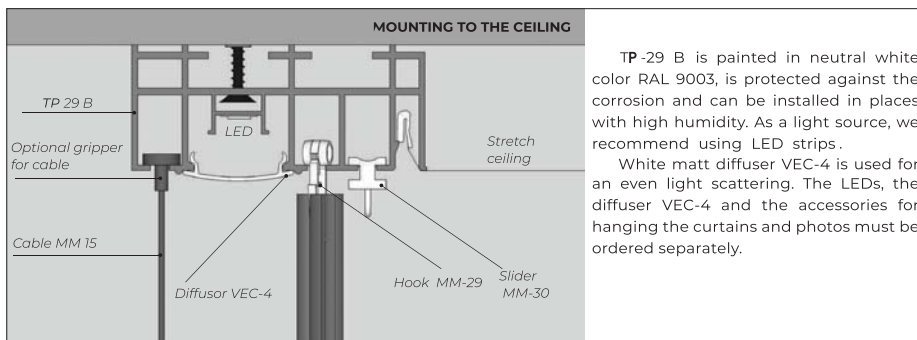


DESCRIPTION

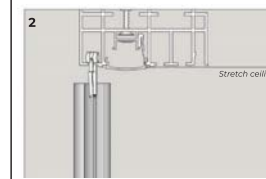
Aluminum profile TP 29 B is an integrated solution that combines several possibilities:

- Curtains are fixed on 3 "rails" and the light source is in between.
- Curtains are fixed on 1 "rail". The curtain is located behind the light source. In this case, the light will emphasize the texture of the material.
- Curtains are fixed on 2 "rails". It is possible to use the profile with and without lighting. If lighting is not used, we recommend covering this area with the diffuser VEC-4.

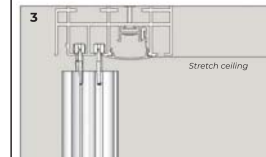
TP 29 B offers also plastic hooks for hanging the curtains – MM-29. MM-30 is used to hang decorations or art and pictures. Standard profile length is 2,5m, but it is possible to order up to 5m long profiles. Profile extensions are made with TC-08 connecting plates. In case of long walls, it is possible to connect the TP-29 B profiles using TC-08 metal connection plates. During installation, profiles are fastened to the ceiling with dowels: no need to install any additional constructions. The corners of the profiles can be cut to the needed angle.



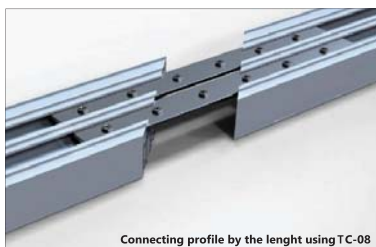
1. Curtains are fixed on 3 "rails" and the light source is in between.



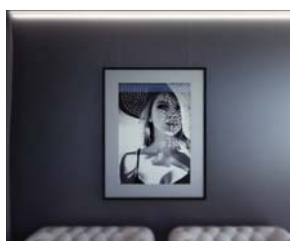
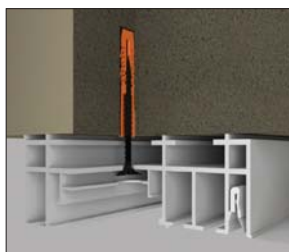
2. Curtains are fixed on 1 "rail". The curtain is located behind the light source. In this case, the light will emphasize the texture of the material.



3. Curtains are fixed on 2 "rails". It is possible to use the profile with and without lighting. If lighting is not used, we recommend covering this area with the diffuser VEC-4.



Connecting profile by the length using TC-08

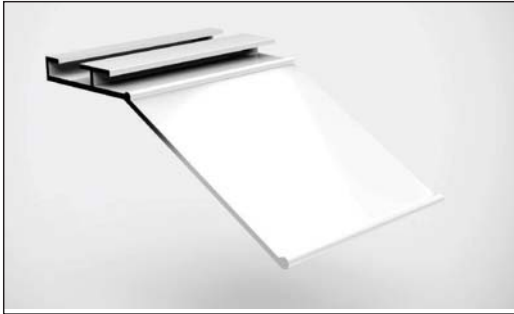




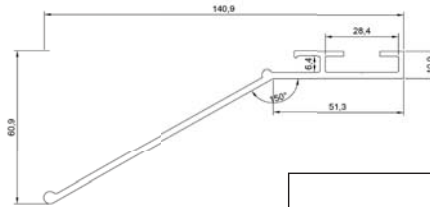
VisualTech Group

TENSOLED

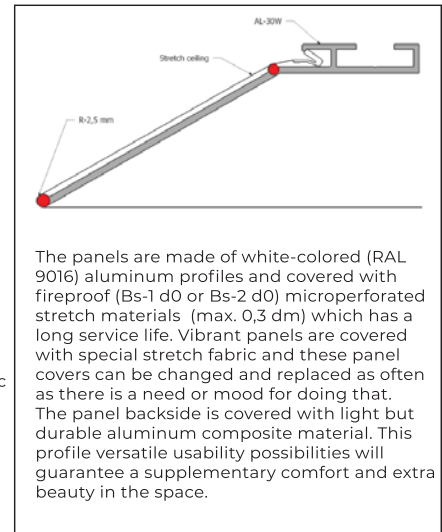
TP30-W S



PROFILE DIMENSIONS



vertical and horizontal mounting
weight 1,03 kg (1 mt)
white color available



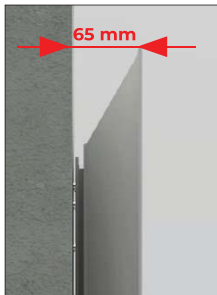
DESCRIPTION

The aluminum profile TP 30W S was developed for creating eye-catching frames, which can be fixed on the wall as well as on the ceiling. The main advantage of such a structure is the elegant sharp edge created by a diagonal profile plane at an angle of 150 degrees to the horizontal plane.

We offer the panels with acoustic qualities and stereo system. The profiles are white-colored (RAL 9016). The frame corners can be fixed with metal corners TC-01 in the upper part of the profile. The backside of profiles is also covered with stretch material. The panels have 2 types of installing methods – it can be placed on the walls and in the ceiling. On the ceiling, we recommend the frame holder TM 328. This way the frames can be attached to the basic ceiling and the panel will be hanging on steel wire ropes, which can be at any length (min 10 cm from the base ceiling). On the walls, we recommend using wall fixators to fasten the panels safely on the wall.

The panels are made of white-colored (RAL 9016) aluminum profiles and covered with fireproof (Bs-1 d0 or Bs-2 d0) microperforated stretch materials (max. 0,3 dm) which has a long service life. Vibrant panels are covered with special stretch fabric and these panel covers can be changed and replaced as often as there is a need or mood for doing that. The panel backside is covered with light but durable aluminum composite material. This profile versatile usability possibilities will guarantee a supplementary comfort and extra beauty in the space.

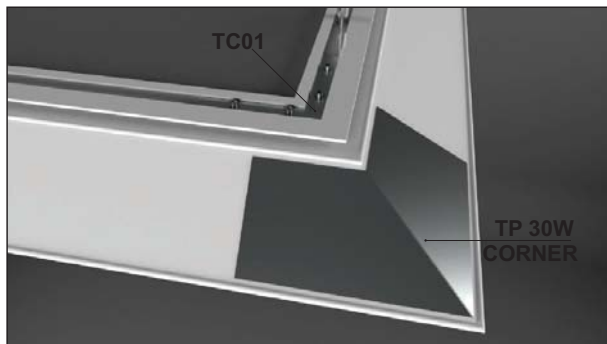
- Silent panels can reduce such environmental threats as stress, productivity losses, communication difficulties, fatigue from lack of sleep, to more serious issues and save thus people's health.
- Tailor-made panels can be an exclusive design elements in the space that will have a considerable impact on subjective well-being as listening the music is one of the most popular leisure activities.



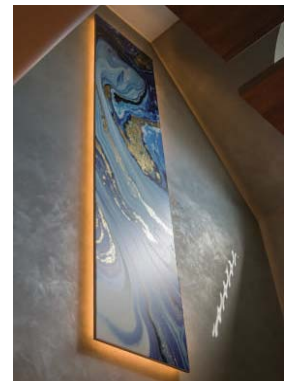
Dimensions:

60 x 120 cm
60 x 180 cm
60 x 200 cm
80 x 80 cm
90 x 90 cm
100 x 100 cm
100 x 200 cm
120 x 120 cm
120 x 200 cm

Home sound systems can be quite complicated. Speakers (220 watt) are integrated in the frame, the canvas can be covered with printed illustrations, meaningful photo memories or single-tone stretch material. The solution can be made without any annoying wires to be seen and without complicated settings to learn as the panel will be supplied as ready to use sound system. The integrated speaker is easily adaptable with a cellphone or other smart devices by Bluetooth.



To reinforce the overall structure of the frame, the corners are joined either by welding or with specially designed fasteners - TP30 CORNER.

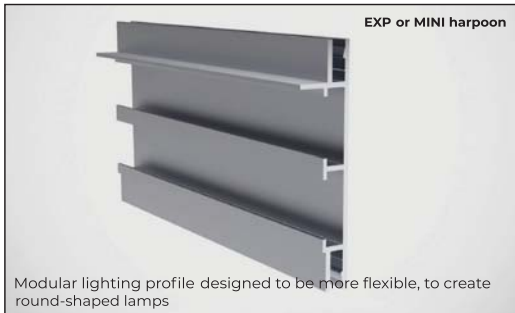




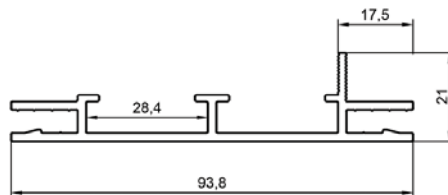
VisualTech Group

TENSOLED

TP34

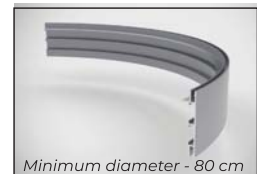


PROFILE DIMENSIONS



weight 0,93 kg (1 mt)
color available

TP34-B

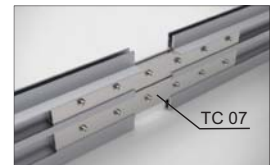


DESCRIPTION

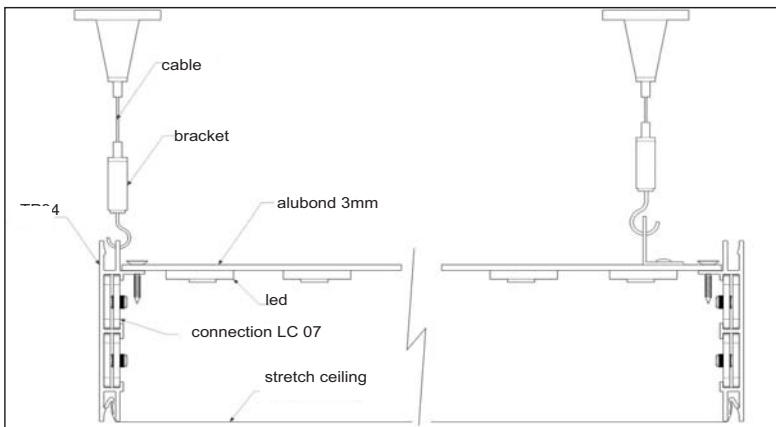
Modular lighting profile TP34 is designed to be more flexible, to create round-shaped lamps that offer a wide range of interior design options with a diffused, even, and relaxing backlight illumination included.

The classical modular lamp would be covered with translucent stretch material, but to have more personalized products one can also order a high quality printed surface of the lamp that will influence the overall design of a room much more than other ordinary lighting fixtures. We would recommend long-lasting LED light sources with a minimal color shift in time for durable and uniform lighting.

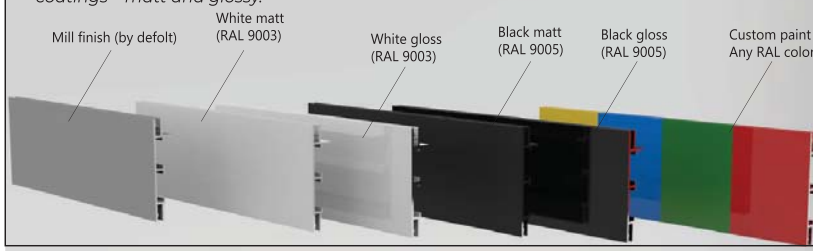
- Modular lighting profile TP34 is designed to create round-shaped lamps
- The profile is available in any powder coating RAL color and also with two different types of coatings – matt and glossy.
- The profile can be bent in various rounded lamps.



To be stably attached, the modular lighting profile requires the stretch material to be equipped with an EXP harpoon or the MINI harpoon. The modular lamps can be installed in three ways: 1) as hanging lamps, 2) fixed directly to the base ceiling and 3) on the walls as well. We recommend fastening the modular lamps with adjustable length cables with a suitable size of hooks for hanging the modular lamp.



The profile is available in any powder coating RAL color and also with two different types of coatings – matt and glossy.

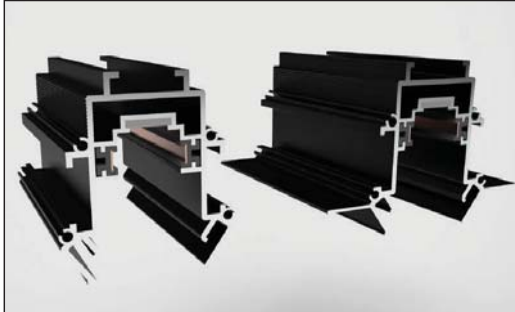




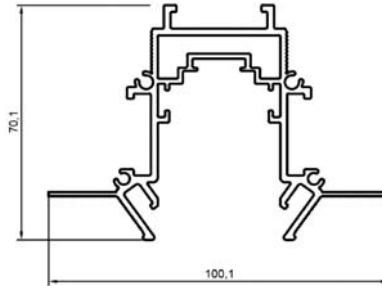
VisualTech Group

TENSOLED

TP35



PROFILE DIMENSIONS



light system profile
horizontal mounting
weight 1,82 kg (1 mt)
black color available

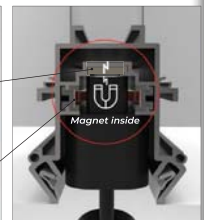
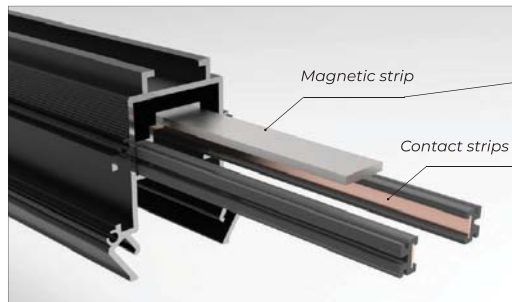
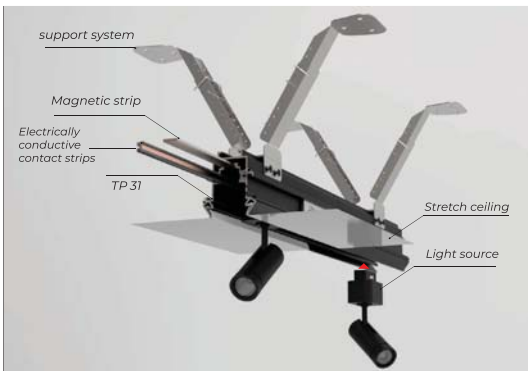


DESCRIPTION

Aluminum profile TP 35 is functional, flexible, and comfortable to use. The profile enables you to relocate the different styles of lamps (9 different design lamps, various dimensions, warm and cold light effects available) as often as needed. The multipurpose profile can be installed in the ceiling or to the walls and model TP 35 works with any kind of material – with the stretch ceiling, and also with more traditional materials (gypsum for example).

The aluminum profile system is equipped with a metal strip and the bottoms of the lamps are equipped with magnets. Throughout the profile, there are electrically conductive contact strips on both sides of the profile, that allow changing the location of the lamps easily. To use visually different lamps, which may provide more warm or more cold light in the room, but also a lamp with more widely diffused light beams or lamps with a more narrow light beam - a convenient solution that is based on the specific needs the space or specific situation requires.

- Use the profile with stretch ceiling or other ceiling materials (with gypsum for example) or combine different types of materials in the same room
- Easily change the location of the lamps and avoid time-consuming and costly construction investments
- Integrate additional or main light source in the ceiling or to the walls
- Use a wide variety of different lamps at the same time or change them occasionally



Creating new, attractive light effects in the space will be done simply within seconds and costly construction investments are past in case one would like to change the interior lighting.

There are two ways to change the location of the lamp:

- slide the lamp along the profile or
- pull the lamp out and push it to the new position slightly

Profile TP35 is suitable to use in any room, no matter if the interior design is contemporary or more traditional looking. It will give also the possibility to combine different materials in the same room.



VisualTech Group

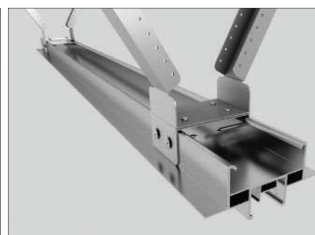
TENSOLED ACCESSORIES

CEILING SUPPORT SYSTEM



Support system - Installing the profiles as well as adjusting the height evenly is with our Support system:

- fast and worry-free task
- professional and easy
- functional and convenient



The set is made of durable galvanized steel and the dimensions can be custom made to fit the system for any profile. Creating a perfectly smooth and straight ceiling, corners, niches can be a real headache because base ceiling imperfections are unfortunately quite common reality. But we have a solution for you – a Support system, a must-have set of tools, that will help to overcome the trickiness of creating an absolutely straight edge, lines, and surfaces in interior design.



ACCESSORIES



TC-01
Corner connection for Tp21, TP22



TC-02
Corner connection for TP22



TC-03
Inside holder for High Power LED.
Used with profiles TP08, TP21, TP22



TC-07
Connecting plates for profiles AL 16,
AL 18, AL 21, AL 22, AL 23



modular profiles connection
TM-S TM-ST TM-AH-90 TM-A-90



VisualTech Group

Tensoled _ Profiles

TENSOLED ACCESSORIES



TP01 - Base plates for Exp frames (2 pcs. + 4 screws)



TM 328



TM 139

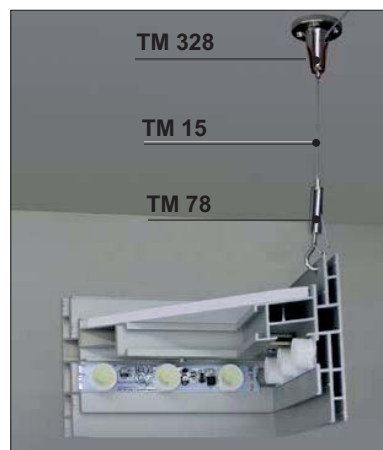


TM 147

Frame holder TM 819 for TP21



Cable Ø1,5 mm MM 15



TM 328

TM 15

TM 78

Gripper TM 78 with carbine hook





VisualTech Group